

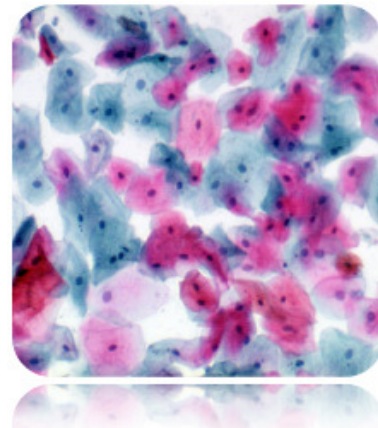
# Papanicolaou (PAP) Stain Kit

**Description:** The Papanicolaou (PAP) Stain Kit is designed to differentiate between a variety of cells in vaginal smears for detection of vaginal, uterine and cervical cancer. In addition, this procedure is valuable for staining a variety of other bodily secretions and cell smears. The procedure was developed in the early 1940's by George Papanicolaou.

Nuclei:	Blue
High Keratin Cells:	Orange
Superficial Cells:	Pink
Erythrocytes:	Dark Pink
Parabasal Cells:	Blue/Green
Intermediate Cells:	Blue/Green
Metaplastic Cells:	May contain both Blue/Green and Pink.

**Uses/Limitations:** Not to be taken internally.  
For In-Vitro Diagnostic use only.  
Histological applications.  
Do not use if reagents become cloudy.  
Do not use past expiration date.  
Use caution when handling reagents.  
Non-Sterile.

**Control Tissue:** Gynecological Smear.  
Any Superficial Cell Smear.




**Ordering information regarding individual components on back page!**

**Kit Contents:**

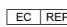
<u>Item #</u>	<u>Components</u>	<u>Volume</u>	<u>Storage</u>
HMM030	Hematoxylin, Mayer's (Lillie's Modification)	30 ml	18-25 °C
OGA030	OG-6 Solution	30 ml	18-25 °C
EAC030	EA-50 Stain Solution	30 ml	18-25 °C

**Precautions:** Avoid contact with skin and eyes.  
Harmful if swallowed.  
Follow all Federal, State, and local regulations regarding disposal.

Storage: 18° C  25° C

 ScyTek Laboratories, Inc.  
205 South 600 West  
Logan, UT 84321  
U.S.A.

 EmergoEurope (31)(0) 70 345-8570  
Molsnstraat 15  
2513 BH Hague, The Netherlands

## Procedure:


1. Place slide in 95% alcohol for 5 minutes.
  2. Place slide in 70% alcohol for 5 minutes.
  3. Place slide in distilled water for 2 minutes.
  4. Apply adequate Hematoxylin, Mayer's (Lillie's Modification) to completely cover cell smear and incubate for 5 minutes.
  5. Rinse slide 1 time in distilled water to remove excess stain.
  6. Rinse slide in tap water for 2 minutes..
  7. Rinse slide in 2 changes of distilled water.
  8. Dip slide several times in 95% alcohol and blot excess off.
  9. Apply adequate OG-6 Stain Solution to completely cover cell smear to excess and incubate for 2 minutes.
  10. Rinse slide gently using absolute alcohol.
  11. Apply adequate EA-50 Stain Solution to completely cover cell smear to excess and incubate for 3 minutes.
- Note: Do not allow EA-50 Stain Solution to evaporate completely. Add additional drops as needed.
12. Rinse slide gently using absolute alcohol.
  13. Quickly dehydrate slide in 3 changes of absolute alcohol.
  14. Clear slide and mount in synthetic resin.


## References:

1. Papanicolaou, G.N. Atlas of Exfoliative Cytology, Harvard University Press, Cambridge, 1954.

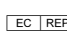
## Bulk Reagent Ordering Information and Current Pricing at [www.scytek.com](http://www.scytek.com)

Description:	Catalog #	Volume
Hematoxylin, Mayer's (Lillie's Modification)	HMM500	500 ml
	HMM999	1000 ml
	HMM3800	1 Gallon
OG-6 Solution	OGA500	500 ml
	OGA999	1000 ml
	OGA3800	1 Gallon
EA-50 Stain Solution	EAC500	500 ml
	EAC999	1000 ml
	EAC3800	1 Gallon

Storage: 18° C  25° C

 ScyTek Laboratories, Inc.  
205 South 600 West  
Logan, UT 84321  
U.S.A.

 EmergoEurope (31)(0) 70 345-8570  
Molsnstraat 15  
2513 BH Hague, The Netherlands