



# Actin, Muscle Specific; Clone HHF35 (Ready-To-Use)

<b>Availability/Contents:</b>	<u>Item #</u>	<u>Volume</u>
	A00001-0002	2 ml
	A00001-0007	7 ml
	A00001-0025	25 ml

**Description:**

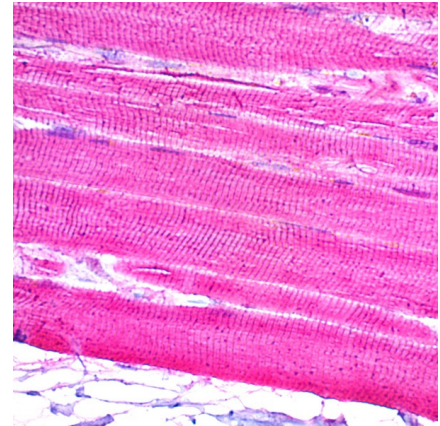
Species:	Mouse
Immunogen:	SDS extract of human myocardium.
Clone:	HHF35
Isotype:	IgG1, kappa
Entrez Gene ID:	58, 59 & 70 (Human)
Hu Chromosome Loc.:	1q42.13 (ACTA1); 10q23.3 (ACTA2); 2p13.1 (ACTG2)
Synonyms:	ACTA, ACTA1, ACTA2, ACTC1, Actin, ACTSA, Alpha-2 actin, alpha skeletal muscle, Alpha-actin-1, Cardiac muscle alpha actin-1, Skeletal muscle alpha actin-1.
Mol. Weight of Antigen:	Multiple
Format:	This antibody has been pretitered and quality controlled to work on formalin-fixed paraffin-embedded as well as acetone fixed cryostat tissue sections. No further titration is required.
Specificity:	This antibody recognizes actin of skeletal, cardiac, and smooth muscle cells. It is not reactive with other mesenchymal cells except for myoepithelium.
Background:	Actin can be resolved on the basis of its isoelectric points into three distinctive components: alpha, beta, and gamma in order of increasing isoelectric point. Anti-muscle specific actin recognizes alpha and gamma isotypes of all muscle groups. Non-muscle cells such as vascular endothelial cells and connective tissues are non-reactive. Also, neoplastic cells of non-muscle-derived tissue such as carcinomas, melanomas, and lymphomas are negative. It stains tumors of smooth muscle (leiomyomas and leiomyosarcomas) as well as skeletal muscle (rhabdomyomas and rhabdomyosarcomas).
Species Reactivity:	Human, Rabbit, Rat and Pig. Others not known.
Positive Control:	Muscle or sarcoma.
Cellular Localization:	Cytoplasmic
Microbiological State:	This product is not sterile.

Storage: 2° C  8° C

 ScyTek Laboratories, Inc.  
205 South 600 West  
Logan, UT 84321  
U.S.A.

  
EC REP  
Emergo Europe  
Molenstraat 15  
2513 BH Hague, The Netherlands

**Uses/Limitations:** Not to be taken internally.  
 For Research Use Only.  
 This product is intended for qualitative immunohistochemistry with normal and neoplastic formalin-fixed, paraffin-embedded tissue sections, to be viewed by light microscopy.  
 Do not use if reagent becomes cloudy.  
 Do not use past expiration date.  
 Non-Sterile.



FFPE human skeletal muscle (400X) stained with Actin, Muscle Specific; Clone HHF35 using UltraTek Alk-Phos and Permanent Red Chromogen.

**Ordering Information and Current Pricing at [www.scytek.com](http://www.scytek.com)**

**Procedure:**

1. **Tissue Section Pretreatment (Highly Recommended):** Staining of formalin fixed, paraffin embedded tissue sections is significantly enhanced by pretreatment with Citrate Plus (ScyTek catalog# CPL500).
2. **Primary Antibody Incubation Time:** We suggest an incubation period of 30 minutes at room temperature. However, depending upon the fixation conditions and the staining system employed, optimal incubation should be determined by the user.
3. **Visualization:** For maximum staining intensity we recommend the “UltraTek HRP Anti-Polyvalent Lab Pack” (ScyTek catalog# UHP125, see IFU for instructions) combined with the “DAB Chromogen/Substrate Bulk Pack (High Contrast)” (ScyTek catalog# ACV500, see IFU for instructions).


**Precautions:** Contains Sodium Azide as a preservative (0.09% w/v).  
 Do not pipette by mouth.  
 Avoid contact of reagents and specimens with skin and mucous membranes.  
 Avoid microbial contamination of reagents or increased nonspecific staining may occur.  
 This product contains no hazardous material at a reportable concentration according to U.S. 29 CFR 1910.1200, OSHA Hazardous Communication Standard and EC Directive 91/155/EC.


**References:**

1. Tsukada T. *et. al.* Am J Pathol 1987, 126:51.
2. Tsukada T. *et. al.* Am J Pathol 1987, 127:389.

**Warranty:**

No products or “Instructions For Use (IFU)” are to be construed as a recommendation for use in violation of any patents. We make no representations, warranties or assurances as to the accuracy or completeness of information provided on our IFU or website. Our warranty is limited to the actual price paid for the product. ScyTek Laboratories, Inc. is not liable for any property damage, personal injury, time or effort or economic loss caused by our products. Immunohistochemistry is a complex technique involving both histological and immunological detection methods. Tissue processing and handling prior to immunostaining can cause inconsistent results. Variations in fixation and embedding or the inherent nature of the tissue specimen may cause variations in results. Endogenous peroxidase activity or pseudoperoxidase activity in erythrocytes and endogenous biotin may cause non-specific staining depending on detection system used.

Storage: 2° C  8° C

 ScyTek Laboratories, Inc.  
 205 South 600 West  
 Logan, UT 84321  
 U.S.A.

  
 EC REP  
 Emργο Europe  
 Molenstraat 15  
 2513 BH Hague, The Netherlands