

MART-1 / Melan-A / MLANA (Melanoma Marker); Clone A103 (Concentrate)

Availability/Contents:

<u>Item #</u>	<u>Volume</u>
RA0114-C.5	0.5 ml

Description:

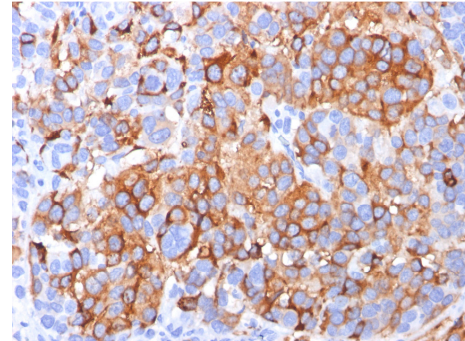
Species:	Mouse
Immunogen:	Recombinant hMART-1 protein
Clone:	A103
Isotype:	IgG1, kappa
Entrez Gene ID:	2315 (Human); 77836 (Mouse); 293890 (Rat)
Hu Chromosome Loc.:	9p24.1
Synonyms:	Antigen LB39-AA, Antigen SK29-AA, Melanoma antigen recognized by T-cells 1, MLAN-A, MLANA
Mol. Weight of Antigen:	20-22kDa (dimer)
Format:	200µg/ml of Ab purified from Bioreactor Concentrate by Protein A/G. Prepared in 10mM PBS with 0.05% BSA & 0.05% azide.
Specificity:	This monoclonal antibody recognizes a protein dimer of 20-22kDa, identified as MART-1 (Melanoma Antigen Recognized by T-cells 1) or Melan-A. This antibody labels melanomas and other tumors showing melanocytic differentiation. It is also a useful positive-marker for angiomyolipomas. It does not stain tumor cells of epithelial, lymphoid, glial, or mesenchymal origin.
Background:	MART-1 is a newly identified melanocyte differentiation antigen recognized by autologous cytotoxic T-lymphocytes. Seven other melanoma associated antigens recognized by autologous cytotoxic T-cells include MAGE-1, MAGE-3, tyrosinase, gp100, gp75, BAGE-1, and GAGE-1. Subcellular fractionation shows that MART-1 is present in melanosomes and endoplasmic reticulum.
Species Reactivity:	Human, Mouse, Rat and Dog. Others not tested.
Positive Control:	SK-MEL-13 and SK-MEL-19 Melanoma cell lines, Melanomas.
Cellular Localization:	Cytoplasmic
Titer/ Working Dilution:	Immunohistochemistry (Frozen and Formalin-fixed): 0.5-1 µg/ml Flow Cytometry: 0.5-1 µg/million cells Immunofluorescence: 0.5-1 µg/ml Western Blotting: 0.5-1 µg/ml Immunoprecipitation: 0.5-1 µg/500µg protein lysate
Microbiological State:	This product is not sterile.

Storage: 2° C  8° C

 ScyTek Laboratories, Inc.
205 South 600 West
Logan, UT 84321
U.S.A.

  EmergoEurope (31)(0) 70 345-8570
Molsnstraat 15
2513 BH Hague, The Netherlands

Uses/Limitations: Not to be taken internally.
For Research Use Only.
This product is intended for qualitative immunohistochemistry with normal and neoplastic formalin-fixed, paraffin-embedded tissue sections, to be viewed by light microscopy.
Do not use if reagent becomes cloudy.
Do not use past expiration date.
Non-Sterile.



Ordering Information and Current Pricing at www.scytek.com

Formalin-paraffin human melanoma stained with MART-1; Clone A103. Note cytoplasmic staining of cells.

Procedure:

- Tissue Section Pretreatment (Highly Recommended):** Staining of formalin fixed, paraffin embedded tissue sections is significantly enhanced by pretreatment with Citrate Plus (ScyTek catalog# CPL500).
- Primary Antibody Incubation Time:** We suggest an incubation period of 30 minutes at room temperature. However, depending upon the fixation conditions and the staining system employed, optimal incubation should be determined by the user.
- Visualization:** For maximum staining intensity we recommend the “UltraTek HRP Anti-Polyvalent Lab Pack” (ScyTek catalog# UHP125, see IFU for instructions) combined with the “DAB Chromogen/Substrate Bulk Pack (High Contrast)” (ScyTek catalog# ACV500, see IFU for instructions).

Precautions: Contains Sodium Azide as a preservative (0.09% w/v).
Do not pipette by mouth.
Avoid contact of reagents and specimens with skin and mucous membranes.
Avoid microbial contamination of reagents or increased nonspecific staining may occur.
This product contains no hazardous material at a reportable concentration according to U.S. 29 CFR 1910.1200, OSHA Hazardous Communication Standard and EC Directive 91/155/EC.

References:

- Chen Y-T, *et al.* Proc Natl Acad Sci, USA, 1996, 93:5915-19.

Warranty:

No products or “Instructions For Use (IFU)” are to be construed as a recommendation for use in violation of any patents. We make no representations, warranties or assurances as to the accuracy or completeness of information provided on our IFU or website. Our warranty is limited to the actual price paid for the product. ScyTek Laboratories, Inc. is not liable for any property damage, personal injury, time or effort or economic loss caused by our products. Immunohistochemistry is a complex technique involving both histological and immunological detection methods. Tissue processing and handling prior to immunostaining can cause inconsistent results. Variations in fixation and embedding or the inherent nature of the tissue specimen may cause variations in results. Endogenous peroxidase activity or pseudoperoxidase activity in erythrocytes and endogenous biotin may cause non-specific staining depending on detection system used.

Storage: 2° C  8° C



ScyTek Laboratories, Inc.
205 South 600 West
Logan, UT 84321
U.S.A.

CE

 EmergoEurope (31)(0) 70 345-8570
Molsnstraat 15
2513 BH Hague, The Netherlands