

gp100 / Melanosome / PMEL17 / SILV (Melanoma Marker); Clone HMB45 & PMEL/783 (Concentrate)

Availability/Contents:

Item #


RA0294-C.5


Volume

0.5 ml

Description:

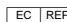
Species:	Mouse
Immunogen:	Extract of pigmented melanoma metastases from lymph nodes (HMB45); Recombinant human SILV protein (PMEL/783)
Clone:	HMB45 & PMEL/783
Isotype:	IgG1, kappa (HMB45); IgG1, kappa (PMEL/783)
Entrez Gene ID:	6490 (Human)
Hu Chromosome Loc.:	12q13.2
Synonyms:	95kDa melanocyte-specific secreted glycoprotein, M-beta, Melanocyte lineage specific antigen GP100, Melanocyte protein Pmel 17, Melanoma associated ME20 antigen, Melanosomal matrix protein17, p100, p26, PMEL17, Premelanosome protein, Secreted melanoma-associated ME20 antigen, SILV, Silver homolog
Mol. Weight of Antigen:	90-100kDa
Format:	200µg/ml of Ab purified from Bioreactor Concentrate by Protein A/G. Prepared in 10mM PBS with 0.05% BSA & 0.05% azide.
Specificity:	By immunohistochemistry, this antibody specifically recognizes a protein in melanocytes and melanomas. This antibody reacts with junctional and blue nevus cells and variably with fetal and neonatal melanocytes. Intradermal nevi, normal adult melanocytes, and non-melanocytic cells are negative. It does not stain tumor cells of epithelial, lymphoid, glial, or mesenchymal origin. This antibody also stains Angiomyolipoma (PEComa).
Background:	Metastatic amelanotic melanoma can often be confused with a variety of poorly differentiated carcinomas, large cell lymphomas, and sarcomas using H & E stains alone. It is also difficult to differentiate melanoma from spindle cell carcinomas and various types of mesenchymal neoplasms. Anti-HMB-45 stains fetal and neonatal melanocytes, junctional and blue nevus cells, and malignant melanoma.
Species Reactivity:	Human. Others not tested.
Positive Control:	SK-MEL-28 cells or Melanoma.
Cellular Localization:	Cytoplasmic
Titer/ Working Dilution:	Immunohistochemistry (Frozen and Formalin-fixed): 0.5-1 µg/ml
	Flow Cytometry: 0.5-1 µg/million cells
	Immunofluorescence: 0.5-1 µg/ml
	Western Blotting: 0.5-1 µg/ml
	Immunoprecipitation: 0.5-1 µg/500µg protein lysate
Microbiological State:	This product is not sterile.

Storage: 2° C  8° C

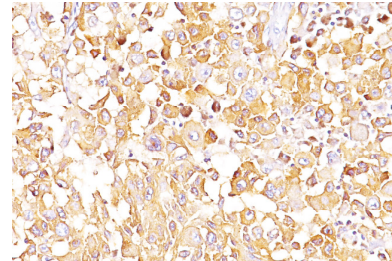


ScyTek Laboratories, Inc.
205 South 600 West
Logan, UT 84321
U.S.A.

CE

 EmergoEurope (31)(0) 70 345-8570
Molsnstraat 15
2513 BH Hague, The Netherlands

Uses/Limitations: Not to be taken internally.
 For Research Use Only.
 This product is intended for qualitative immunohistochemistry with normal and neoplastic formalin-fixed, paraffin-embedded tissue sections, to be viewed by light microscopy.
 Do not use if reagent becomes cloudy.
 Do not use past expiration date.
 Non-Sterile.



Formalin-fixed, paraffin-embedded human melanoma (20X) stained with gp100; Clone HMB45.

Ordering Information and Current Pricing at www.scytek.com

Procedure:

1. **Tissue Section Pretreatment (Required):** Staining of formalin fixed, paraffin embedded tissue sections is significantly enhanced by pretreatment with Citrate Plus (ScyTek catalog# CPL500).
2. **Primary Antibody Incubation Time:** We suggest an incubation period of 30 minutes at room temperature. However, depending upon the fixation conditions and the staining system employed, optimal incubation should be determined by the user.
3. **Visualization:** For maximum staining intensity we recommend the “UltraTek HRP Anti-Polyvalent Lab Pack” (ScyTek catalog# UHP125, see IFU for instructions) combined with the “DAB Chromogen/Substrate Bulk Pack (High Contrast)” (ScyTek catalog# ACV500, see IFU for instructions).


Precautions: Contains Sodium Azide as a preservative (0.09% w/v).
 Do not pipette by mouth.
 Avoid contact of reagents and specimens with skin and mucous membranes.
 Avoid microbial contamination of reagents or increased nonspecific staining may occur.
 This product contains no hazardous material at a reportable concentration according to U.S. 29 CFR 1910.1200, OSHA Hazardous Communication Standard and EC Directive 91/155/EC.


References:

1. Esclamado RM, *et. al.* American Journal of Surgery, 1986, 152(4):376-85.
2. Gown AM, *et. al.* American Journal of Pathology, 1986, 123(2):195-203.
3. Adema, G.J., *et al.* 1994. Molecular characterization of the melanocyte lineage-specific antigen gp100. J. Biol. Chem. 269: 20126-20133.

Warranty:

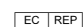
No products or “Instructions For Use (IFU)” are to be construed as a recommendation for use in violation of any patents. We make no representations, warranties or assurances as to the accuracy or completeness of information provided on our IFU or website. Our warranty is limited to the actual price paid for the product. ScyTek Laboratories, Inc. is not liable for any property damage, personal injury, time or effort or economic loss caused by our products. Immunohistochemistry is a complex technique involving both histological and immunological detection methods. Tissue processing and handling prior to immunostaining can cause inconsistent results. Variations in fixation and embedding or the inherent nature of the tissue specimen may cause variations in results. Endogenous peroxidase activity or pseudoperoxidase activity in erythrocytes and endogenous biotin may cause non-specific staining depending on detection system used.

Storage: 2° C  8° C



ScyTek Laboratories, Inc.
 205 South 600 West
 Logan, UT 84321
 U.S.A.



 EmergoEurope (31)(0) 70 345-8570
 Molsnstraat 15
 2513 BH Hague, The Netherlands