


# Ksp-Cadherin (Kidney-Specific Cadherin) / CDH16; Clone CDH16/1532R (Concentrate)

Availability/Contents:	Item #	Volume
	RA0470-C.1	0.1 ml
	RA0470-C.5	0.5 ml
	RA0470-C1	1 ml

## Description:

Species:	Rabbit
Immunogen:	Recombinant human full-length CDH16 protein
Clone:	CDH16/1532R
Isotype:	Rabbit / IgG, kappa
Entrez Gene ID:	1014
Hu Chromosome Loc.:	16q22.1
Synonyms:	Cadherin-16 (CDH16); Kidney-specific cadherin; Ksp-cadherin antibody
Mol. Weight of Antigen:	130kDa
Format:	200ug/ml of Ab purified by Protein A. Prepared in 10mM PBS with 0.05% BSA & 0.05% azide.
Specificity:	This monoclonal Ab recognizes a protein of 130kDa, identified as Ksp-cadherin.
Background:	Cadherins form a superfamily of related glycoproteins that mediate calcium-dependent cell adhesion and transmit signals from the extracellular matrix to the cytoplasm. Cadherins have been implicated in embryogenesis, tissue morphogenesis, tissue structure maintenance, cell polarization, neoplastic invasiveness and metastasis, and membrane transport. It is suggested that Ksp-cadherin is a marker for terminal differentiation of the basolateral membranes of renal tubular epithelial cells. Within the kidney, Ksp-Cadherin is found exclusively in the basolateral membrane of renal tubular epithelial cells and collecting duct cells, and not in glomeruli, renal interstitial cells, or blood vessels. Ksp-Cadherin has been suggested to distinguish Chromophobe Renal-Cell Carcinoma from Oncocytoma.
Species Reactivity:	Human, Mouse and Rat. Others not known.
Positive Control:	Normal kidney or renal cell carcinoma.
Cellular Localization:	Cell Surface with some cytoplasmic.
Titer/ Working Dilution:	Immunohistochemistry (Frozen and Formalin-fixed): 0.5-1 µg/ml Flow Cytometry: 0.5-1 µg/million cells Immunofluorescence: 1-2 µg/ml
Microbiological State:	This product is not sterile.

 Storage: 2° C  8° C


 ScyTek Laboratories, Inc.  
 205 South 600 West  
 Logan, UT 84321  
 U.S.A.

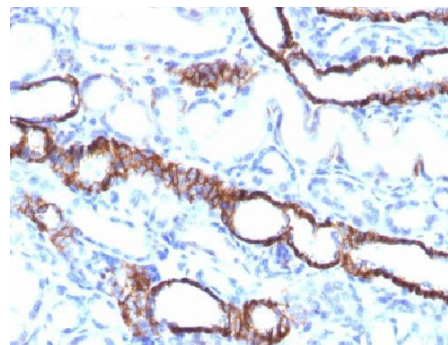
CE

EC REP

 Emergo Europe  
 Prinsessegracht 20  
 2514 AP The Hague, The Netherlands

**Uses/Limitations:**

- Not to be taken internally.
- For Research Use Only.
- This product is intended for qualitative immunohistochemistry with normal and neoplastic formalin-fixed, paraffin-embedded tissue sections, to be viewed by light microscopy.
- Do not use if reagent becomes cloudy.
- Do not use past expiration date.
- Non-Sterile.



Formalin-fixed, paraffin-embedded Rat Kidney stained with KSP-Cadherin Recombinant Rabbit Monoclonal Antibody (CDH16/1532R)

**Ordering Information and Current Pricing at** [www.scytek.com](http://www.scytek.com)

## Procedure:

- Tissue Section Pretreatment (Required):** Staining of formalin fixed, paraffin embedded tissue sections is significantly enhanced by pretreatment with Tris-EDTA HIER Solution (10x) pH 9.0 (ScyTek catalog# TES500).
- Primary Antibody Incubation Time:** We suggest an incubation period of 30 minutes at room temperature. However, depending upon the fixation conditions and the staining system employed, optimal incubation should be determined by the user.
- Visualization:** For maximum staining intensity we recommend the “UltraTek HRP Anti-Polyvalent Lab Pack” (ScyTek catalog# UHP125, see IFU for instructions) combined with the “DAB Chromogen/Substrate Bulk Pack (High Contrast)” (ScyTek catalog# ACV500, see IFU for instructions).

**Precautions:**

- Contains Sodium Azide as a preservative (0.09% w/v).
- Do not pipette by mouth.
- Avoid contact of reagents and specimens with skin and mucous membranes.
- Avoid microbial contamination of reagents or increased nonspecific staining may occur.
- This product contains no hazardous material at a reportable concentration according to U.S. 29 CFR 1910.1200, OSHA Hazardous Communication Standard and EC Directive 91/155/EC.


## References:

- Shen, S.S., et al. 2005. Kidney-specific cadherin, a specific marker for the distal portion of the nephron and related renal neoplasms. *Mod Pathol.* 18: 933-40.
- Mazal, P.R., et al. 2005. Expression of kidney-specific cadherin distinguishes chromophobe renal cell carcinoma from renal oncocytoma. *Hum Pathol.* 36: 22-28.

**Warranty:**

No products or “Instructions For Use (IFU)” are to be construed as a recommendation for use in violation of any patents. We make no representations, warranties or assurances as to the accuracy or completeness of information provided on our IFU or website. Our warranty is limited to the actual price paid for the product. ScyTek Laboratories, Inc. is not liable for any property damage, personal injury, time or effort or economic loss caused by our products. Immunohistochemistry is a complex technique involving both histological and immunological detection methods. Tissue processing and handling prior to immunostaining can cause inconsistent results. Variations in fixation and embedding or the inherent nature of the tissue specimen may cause variations in results. Endogenous peroxidase activity or pseudoperoxidase activity in erythrocytes and endogenous biotin may cause non-specific staining depending on detection system used.

Storage: 2° C  8° C

 ScyTek Laboratories, Inc.  
205 South 600 West  
Logan, UT 84321  
U.S.A.

CE

EC REP  
Emergo Europe  
Prinsessegracht 20  
2514 AP The Hague, The Netherlands