

Thyroglobulin; Clone 2H11 (Concentrate)

| | | |
|-------------------------------|---------------|---------------|
| Availability/Contents: | <u>Item #</u> | <u>Volume</u> |
| | A00108-C | 1 ml |

Description:

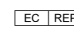
| | |
|---|--|
| Species: Immunogen: Clone: Isotype: Concentration: Format: Specificity: Species Reactivity: Cellular Localization: Titer/Working Dilution: Microbiological State: | Mouse Human thyroid follicular cells were used as immunogen to generate the thyroglobulin antibody. 2H11 IgG1, Kappa 100µm/ml. This antibody is provided in a phosphate buffered saline containing 1% BSA. Thyroglobulin is a 660 kDa dimeric preprotein with multiple glycosylation sites is produced by and processed within the thyroid gland to produce the hormone thyroxine and triiodothyronine. Prior to forming dimers, thyroglobulin monomers undergo conformation maturation in the endoplasmic reticulation. Thyroglobulin dimerization as well as transport of thyroglobulin to the Golgi complex is calcium dependent. Thyroglobulin defects resulting from defective dimer formation and export to the Golgi is thought to cause some types of goiter. Antibody against thyroglobulin may be produced by individuals with other diseases arising from the gland such as Hashimoto's or Graves disease. Hence the presence of thyroglobulin autoantibodies can help to identify disease. Antibody to thyroglobulin has been shown to be useful for the identification of papillary and follicular thyroid carcinoma; thyroglobulin antibody positive lesions are of thyroidal origin. Carcinomas of nonthyroidal origin do not express thyroglobulin and hence are thyroglobulin antibody negative. It is important to note though that not every type of thyroidal lesion is thyroglobulin antibody positive, a number of forms are negative. Hence a negative result does not necessarily rule out that a given lesion or metastasis originated from the thyroid gland. Human Cytoplasmic. Immunohistochemistry: 1:100 – 1:200 This product is not sterile. |
|---|--|

Storage: 2° C  8° C

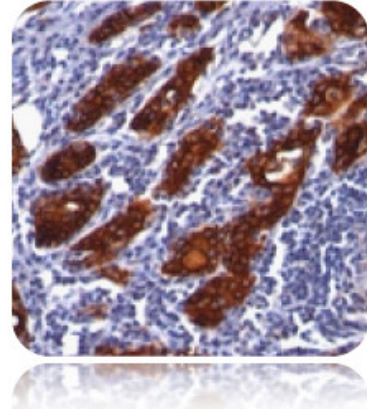


ScyTek Laboratories, Inc.
 205 South 600 West
 Logan, UT 84321
 U.S.A.

CE

 EmergoEurope (31)(0) 70 345-8570
 Molsnstraat 15
 2513 BH Hague, The Netherlands

Uses/Limitations: Not to be taken internally.
 For In Vitro Diagnostic Use.
 This product is intended for qualitative immunohistochemistry with normal and neoplastic formalin-fixed, paraffin-embedded tissue sections, to be viewed by light microscopy.
 Do not use if reagent becomes cloudy.
 Do not use past expiration date.
 Use caution when handling reagents.
 Non-Sterile.



Ordering Information and Current Pricing at www.scytek.com

Procedure:


1. **Tissue Section Pretreatment:** Staining of formalin fixed, paraffin embedded tissue sections is enhanced by pretreatment with Citrate Plus (ScyTek catalog# CPL500) or 10mM citrate buffer, pH 6.0 (ScyTek Catalog# CBB500, see IFU for instructions).
2. **Primary Antibody Incubation Time:** We suggest an incubation period of 30 minutes at room temperature. However, depending upon the fixation conditions and the staining system employed, optimal incubation should be determined by the user.
3. **Visualization:** For maximum staining intensity we recommend the “UltraTek HRP Anti-Polyvalent Lab Pack” (ScyTek catalog# UHP125, see IFU for instructions) combined with the “DAB Chromogen/Substrate Bulk Pack (High Contrast)” (ScyTek catalog# ACV500, see IFU for instructions).


Precautions: Contains Sodium Azide as a preservative (0.09% w/v).
 Do not pipette by mouth.
 Avoid contact of reagents and specimens with skin and mucous membranes.
 Avoid microbial contamination of reagents or increased nonspecific staining may occur.
 This product contains no hazardous material at a reportable concentration according to U.S. 29 CFR 1910.1200, OSHA Hazardous Communication Standard and EC Directive 91/155/EC.

References:

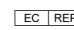
1. He XX, VP Antao, D Basila. Blood 79:2296-2302 (1992).
2. Lanza F, L Healy, DR Sutherland. Journal of Biol Reg Homeost Agents 15:1-13 (2001).

Warranty: No products or “Instructions For Use (IFU)” are to be construed as a recommendation for use in violation of any patents. We make no representations, warranties or assurances as to the accuracy or completeness of information provided on our IFU or website. Our warranty is limited to the actual price paid for the product. ScyTek Laboratories, Inc. is not liable for any property damage, personal injury, time or effort or economic loss caused by our products. Immunohistochemistry is a complex technique involving both histological and immunological detection methods. Tissue processing and handling prior to immunostaining can cause inconsistent results. Variations in fixation and embedding or the inherent nature of the tissue specimen may cause variations in results. Endogenous peroxidase activity or pseudoperoxidase activity in erythrocytes and endogenous biotin may cause non-specific staining depending on detection system used.

Storage: 2° C  8° C

 ScyTek Laboratories, Inc.
 205 South 600 West
 Logan, UT 84321
 U.S.A.

CE

 EmergoEurope (31)(0) 70 345-8570
 Molsnstraat 15
 2513 BH Hague, The Netherlands