

Cytokeratin 6; Clone EP67 (Concentrate)


Availability/Contents:	<u>Item #</u>	<u>Volume</u>
	A00140-C	1 ml


Description:

Species:	Rabbit
Designation:	Rabbit Monoclonal
Clone:	EP67
Isotype:	IgG
Immunogen:	Rabbits were injected with a synthetic peptide corresponding to residues on the C-terminus of human Cytokeratin 6.
Format:	This antibody is provided in a phosphate buffered saline containing 1% BSA.
Specificity:	Cytokeratin 6 is expressed in many non-keratinizing stratified squamous epithelia of large cell carcinoma and pulmonary squamous cell carcinomas. It can also be found on stratified epithelia including: basal layer of epidermis, the outer root sheath of hair follicles, esophagus, oral mucosa, as well as basal cells in prostate glands and myoepithelial cells in mammary glands.

Background:	The human type II Cytokeratin 6 (CK6) is expressed in a heterogeneous array of epithelial tissues under normal conditions, but is better known for its strong induction in stratified epithelia that feature an enhanced cell proliferation rate or abnormal differentiation. In humans, multiple isoforms of Cytokeratin 6 encoded by several highly homologous genes have been identified which have distinct tissue expression patterns. Cytokeratin 6A is the dominant form in epithelial tissue. The gene encoding human Cytokeratin 6A maps to chromosome 12q13. Mutations to this gene are linked to several inheritable hair and skin disorders (psoriasis and actinic keratosis) and in cancer.
-------------	---

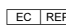
Species Reactivity:	Human. Others not tested.
Positive Control:	Skin for normal tissue and Mesothelioma for abnormal tissue.
Cellular Localization:	Cytoplasm and Cell Surface.
Titer/Working Dilution:	Immunohistochemistry: 1:75 – 1:150
Microbiological State:	This product is not sterile.

Storage: 2° C  8° C

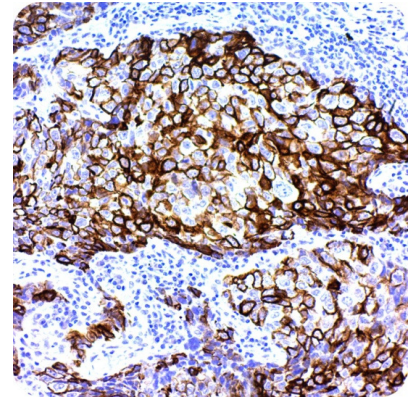


ScyTek Laboratories, Inc.
205 South 600 West
Logan, UT 84321
U.S.A.

CE 

 EmergoEurope (31)(0) 70 345-8570
Molsnstraat 15
2513 BH Hague, The Netherlands

Uses/Limitations: Not to be taken internally.
 For In Vitro Diagnostic Use.
 This product is intended for qualitative immunohistochemistry with normal and neoplastic formalin-fixed, paraffin-embedded tissue sections, to be viewed by light microscopy.
 Do not use if reagent becomes cloudy.
 Do not use past expiration date.
 Non-Sterile.



Human lung squamous cell carcinoma stained with Ultra-Tek HRP and DAB Chromogen.

Ordering Information and Current Pricing at www.scytek.com

Procedure:


1. **Tissue Section Pretreatment (Highly Recommended):** Staining of formalin fixed, paraffin embedded tissue sections is enhanced by pretreatment with Citrate Plus (ScyTek catalog# CPL500).
2. **Primary Antibody Incubation Time:** We suggest an incubation period of 30 minutes at room temperature. However, depending upon the fixation conditions and the staining system employed, optimal incubation should be determined by the user.
3. **Visualization:** For maximum staining intensity we recommend the “UltraTek HRP Anti-Polyvalent Lab Pack” (ScyTek catalog# UHP125, see IFU for instructions) combined with the “DAB Chromogen/Substrate Bulk Pack (High Contrast)” (ScyTek catalog# ACV500, see IFU for instructions).


Precautions: Contains Sodium Azide as a preservative (0.09% w/v).
 Do not pipette by mouth.
 Avoid contact of reagents and specimens with skin and mucous membranes.
 Avoid microbial contamination of reagents or increased nonspecific staining may occur.
 This product contains no hazardous material at a reportable concentration according to U.S. 29 CFR 1910.1200, OSHA Hazardous Communication Standard and EC Directive 91/155/EC.

References:

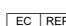
1. Rice, R.H., et al. PloS One 2013;8:e75355.
2. Saad, R.S., et al. Diagn Cytopathol 2006, 34:801-806.
3. King, J.E., et al. Histopathology 2006, 48:223-232.
4. Rabban, J.T., et al. Human Pathol 2006, 37:787-793.
5. Wong, P., et al. J Cell Biol 2000, 150(4):921-928.
6. Mommers, J.M., et al. Dermatology 2000, 201:15-20.
7. Takahashi, K., et al. J Biol Chem 1995, 270(31):18581-18592.

Note: Cytokeratin 6 bearing EP Clone EP67 is Manufactured using Epitomics’s RabMAb® technology under U.S. Patent Nos. 5,675,063 and 7,402,409.

Storage: 2° C  8° C

 ScyTek Laboratories, Inc.
 205 South 600 West
 Logan, UT 84321
 U.S.A.

 EmergoEurope (31)(0) 70 345-8570
 Molsnstraat 15
 2513 BH Hague, The Netherlands

Instructions For Use
A00140-C-IFU-IVD


Rev. Date: June 10, 2014


Revision: 1

Page 3 of 3

P.O. Box 3286 - Logan, Utah 84323, U.S.A. - Tel. (800) 729-8350 – Tel. (435) 755-9848 - Fax (435) 755-0015 - www.scytek.com


Warranty: No products or “Instructions For Use (IFU)” are to be construed as a recommendation for use in violation of any patents. We make no representations, warranties or assurances as to the accuracy or completeness of information provided on our IFU or website. Our warranty is limited to the actual price paid for the product. ScyTek Laboratories, Inc. is not liable for any property damage, personal injury, time or effort or economic loss caused by our products. Immunohistochemistry is a complex technique involving both histological and immunological detection methods. Tissue processing and handling prior to immunostaining can cause inconsistent results. Variations in fixation and embedding or the inherent nature of the tissue specimen may cause variations in results. Endogenous peroxidase activity or pseudoperoxidase activity in erythrocytes and endogenous biotin may cause non-specific staining depending on detection system used.

Storage: 2° C  8° C



ScyTek Laboratories, Inc.
205 South 600 West
Logan, UT 84321
U.S.A.

 EmergoEurope (31)(0) 70 345-8570
Molsnstraat 15
2513 BH Hague, The Netherlands