



Melanoma Associated Antigen; Clone KBA.62 (Ready-To-Use)

Availability/Contents:	<u>Item #</u>	<u>Volume</u>
	A00153-0002	2 ml
	A00153-0007	7 ml
	A00153-0025	25 ml

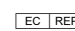
Description:

Species:	Mouse
Immunogen:	Human KAL cells derived from lymph node metastasis of malignant melanoma
Clone:	KBA.62
Isotype:	IgG1, kappa
Entrez Gene ID:	Not Known
Hu Chromosome Loc.:	Not Known
Synonyms:	Human Melanoma Associated Antigen; KBA.62
Mol. Weight of Antigen:	Multiple (140, 135 and 128kDa and two weak bands of 88 and 73kDa)
Format:	This antibody has been pretitered and quality controlled to work on formalin-fixed paraffin-embedded as well as acetone fixed cryostat tissue sections. No further titration is required.
Specificity:	KBA.62 is a novel anti-melanoma antibody. It reacts positively against melanocytic tumors but not against other tumors, thus demonstrating specificity and sensitivity. Moreover, it reacts positively against junctional nevus cells but not intradermal nevi, and against fetal melanocytes but not normal adult melanocytes.
Background:	The KBA.62 antibody is useful in identifying malignant melanomas. Metastatic amelanotic melanoma can often be confused with a variety of poorly differentiated carcinomas, large cell lymphomas, sarcomas, spindle cell carcinomas, and various types of mesenchymal neoplasms. A keratin-negative, vimentin-rich neoplasm that immuno-reacts with an antibody to S-100 protein and with KBA.62 antibody is, with rare exception, a melanoma. Anti-KBA.62 is a useful additional marker for melanoma, specifically in desmoplastic/spindle cell cases, and in the context of micro-metastasis in the sentinel lymph node.
Species Reactivity:	Human. Others not known.
Positive Control:	Melanoma
Cellular Localization:	Cell Surface
Titer/Working Dilution:	No further dilution is required.
Microbiological State:	This product is not sterile.

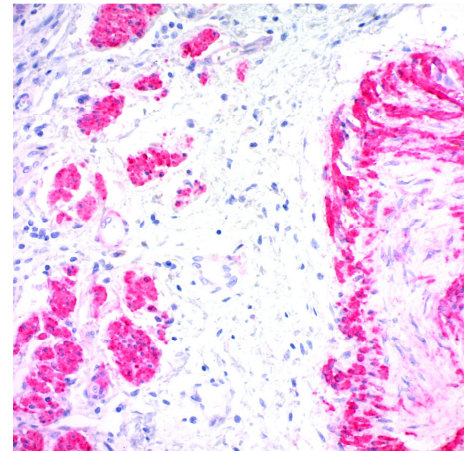
Storage: 2° C  8° C

 ScyTek Laboratories, Inc.
205 South 600 West
Logan, UT 84321
U.S.A.

 EmergoEurope (31)(0) 70 345-8570
Molsnstraat 15
2513 BH Hague, The Netherlands

Uses/Limitations: Not to be taken internally.
 For In Vitro Diagnostic Use.
 This product is intended for qualitative immunohistochemistry with normal and neoplastic formalin-fixed, paraffin-embedded tissue sections, to be viewed by light microscopy.
 Do not use if reagent becomes cloudy.
 Do not use past expiration date.
 Non-Sterile.



FFPE human melanoma stained with Melanoma Associated Antigen; Clone KBA.62 using UltraTek Alk-Phos and Permanent Red Chromogen. 200X

Ordering Information and Current Pricing at www.scytek.com

Procedure:


1. **Tissue Section Pretreatment (Required):** Staining of formalin fixed, paraffin embedded tissue sections is enhanced by pretreatment with Citrate Plus (ScyTek catalog# CPL500).
2. **Primary Antibody Incubation Time:** We suggest an incubation period of 30 minutes at room temperature. However, depending upon the fixation conditions and the staining system employed, optimal incubation should be determined by the user.
3. **Visualization:** For maximum staining intensity we recommend the “UltraTek HRP Anti-Polyvalent Lab Pack” (ScyTek catalog# UHP125, see IFU for instructions) combined with the “DAB Chromogen/Substrate Bulk Pack (High Contrast)” (ScyTek catalog# ACV500, see IFU for instructions).


Precautions: Contains Sodium Azide as a preservative (0.09% w/v).
 Do not pipette by mouth.
 Avoid contact of reagents and specimens with skin and mucous membranes.
 Avoid microbial contamination of reagents or increased nonspecific staining may occur.
 This product contains no hazardous material at a reportable concentration according to U.S. 29 CFR 1910.1200, OSHA Hazardous Communication Standard and EC Directive 91/155/EC.

References:

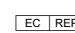
1. E Cohen-Knafo, T al Saati, J Aziza, E Ralfkiaer, J Selves, B Gorguet, and G Delsol. Production and characterisation of an antimelanoma monoclonal antibody KBA.62 using a new melanoma cell line reactive on paraffin wax embedded sections. J Clin Pathol. 1995; 48(9): 826–831.
2. Cécile Pagès et. al. KBA.62: a useful marker for primary and metastatic melanomas. Human Pathology 39(8):1136–1142; 2008.

Warranty: No products or “Instructions For Use (IFU)” are to be construed as a recommendation for use in violation of any patents. We make no representations, warranties or assurances as to the accuracy or completeness of information provided on our IFU or website. Our warranty is limited to the actual price paid for the product. ScyTek Laboratories, Inc. is not liable for any property damage, personal injury, time or effort or economic loss caused by our products. Immunohistochemistry is a complex technique involving both histological and immunological detection methods. Tissue processing and handling prior to immunostaining can cause inconsistent results. Variations in fixation and embedding or the inherent nature of the tissue specimen may cause variations in results. Endogenous peroxidase activity or pseudoperoxidase activity in erythrocytes and endogenous biotin may cause non-specific staining depending on detection system used.

Storage: 2° C  8° C

 ScyTek Laboratories, Inc.
 205 South 600 West
 Logan, UT 84321
 U.S.A.

 EmergoEurope (31)(0) 70 345-8570
 Molsnstraat 15
 2513 BH Hague, The Netherlands