

Chromogranin A; Clones LK2H10 & PHE5 (Concentrate)

Catalog Number	Volume
A00160-C.1	0.1 ml
A00160-C	1 ml

Description

Species: Mouse
Immunogen: Human pheochromocytoma (LK2H10 & PHE5).
Clone: LK2H10 & PHE2
Isotype: IgG1, Kappa (Both)
Format: 200µg/ml of Ab purified from Bioreactor Concentrate by Protein A/G. Prepared in 10mM PBS with 0.05% BSA & 0.05% azide.

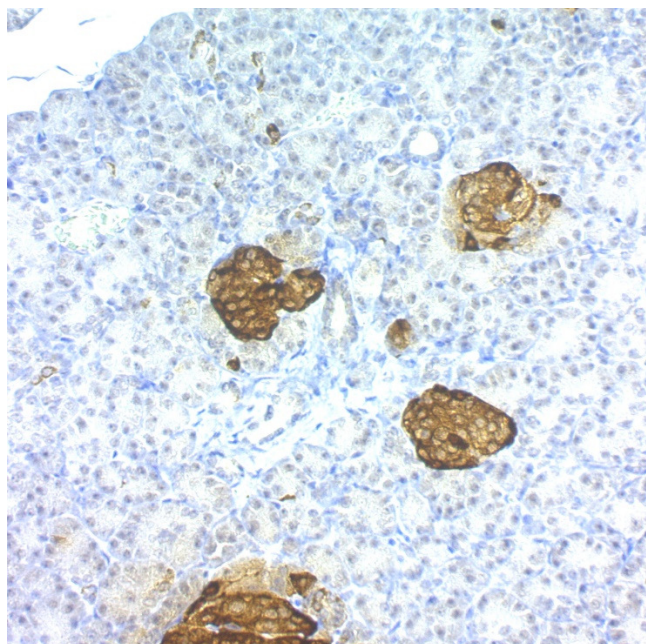
Specificity: Chromogranin A is present in neuroendocrine cells throughout the body, including the neuroendocrine cells of the large and small intestine, adrenal medulla and pancreatic islets. It is an excellent marker for carcinoid tumors, pheochromocytomas, paragangliomas, and other neuroendocrine tumors.

Species Reactivity: Human, Monkey, Pig, Mouse and Rat. Others-not known
Positive Control: PC12 cells. Adrenal gland, bowel, thyroid, pancreas, or pheochromocytoma.

Cellular Localization: Finely granular cytoplasmic

Titer/Working Dilution: Immunohistochemistry (Formalin Fixed): 0.25-0.5 µl/ml

Microbiological State: Nonsterile.



Human pancreas stained using Chromogranin A; Clones L2H10 & PHE5. Results were visualized using ScyTek's UHP500 detection system and DAB Chromogen/Substrate Kit (High Contrast) Cat# ACV500. Magnification 200X.

Intended Use

For In Vitro Diagnostic use. This antibody is intended for the qualitative visualization of the anatomical elements listed in the Specificity section. It is intended to be used within an Immunohistochemistry (IHC) procedure on formalin-fixed paraffin-embedded (FFPE) human tissue followed by visualization by light microscopy. Any diagnostic interpretation of the results of this antibody is to be complemented by morphological studies using proper controls and should be evaluated within the context of the patient's clinical history and other diagnostic tests by a qualified pathologist.

Procedure

1. **Tissue Section Pretreatment (Required):** Staining of formalin fixed, paraffin embedded tissue sections is enhanced by pretreatment with Citrate Plus (ScyTek catalog# CPL500).

2. **Primary Antibody Incubation Time:** We suggest an incubation period of 30 minutes at room temperature. However, depending upon the fixation conditions and the staining system employed, optimal incubation should be determined by the user.

3. **Visualization:** For maximum staining intensity we recommend the "CRF Anti-Polyvalent HRP Polymer" (ScyTek catalog# ABZ125, see IFU for instructions) combined with the "DAB Chromogen/Substrate Bulk Pack (High Contrast)" (ScyTek catalog# ACV500, see IFU for instructions).

Materials and Reagents Required but not Provided

- Control tissue and reagents
- Xylene, graded alcohols, and deionized/distilled water
- IHC detection system. Suggested: ScyTek Cat# ABZ125 "CRF Anti-Polyvalent HRP Polymer" and ScyTek Cat# ACV500 "DAB Chromogen/Substrate Kit (High Contrast)".
- Wash buffer for rinses (ScyTek Cat# TBT500)
- Retrieval solution (ScyTek Cat# CPL500)
- Hematoxylin counterstain and bluing reagent (ScyTek Cat# HMM500 and BRT500)
- Mounting medium and coverslips

Note: ScyTek Laboratories has a wide range of IHC reagents and ancillaries that can be found at scytek.com.

Storage and Stability

Do not Freeze. Store at 2-8°C. Return to 2-8° immediately after use. Do not use after expiration date printed on label. Verify visually that antibody has not been contaminated before use. Do not use if reagent becomes cloudy or precipitates.

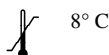
Limitations

Immunohistochemistry is a complex technique involving both histological and immunological detection methods. Tissue processing and handling prior to immunostaining can cause inconsistent results. Variations in fixation and embedding or the inherent nature of the tissue specimen may cause variations in results. Endogenous peroxidase activity or pseudoperoxidase activity in erythrocytes and endogenous biotin may cause non-specific staining depending on detection system used. This data sheet's recommendations and procedures were validated using ScyTek IHC reagents and may not be suitable for other detection systems.


Precautions

- Contains Sodium Azide as a preservative (0.09% w/v), do not ingest. Sodium Azide may react with lead and copper plumbing to form highly explosive metal azides. Upon disposal, flush with large volumes of water to prevent azide build-up in plumbing. This product contains no hazardous material at a reportable concentration according to U.S. 29 CFR 1910.1200, OSHA Hazardous Communication Standard and EC Directive 91/155/EC.
- Do not pipette by mouth.
- Avoid contact of reagents and specimens with skin and mucous membranes.

Storage: 2° C



8° C

 ScyTek Laboratories, Inc.
 205 South 600 West
 Logan, UT 84321
 U.S.A.



EC REP

Emergo Europe
 Prinsessegracht 20
 2514 AP The Hague, The Netherlands

P.O. Box 3286 - Logan, Utah 84323, U.S.A. - Tel. (800) 729-8350 – Tel. (435) 755-9848 - Fax (435) 755-0015 - www.ScyTek.com

4. Avoid microbial contamination of reagents or increased nonspecific staining may occur.
5. The user must validate any procedures and recommendations that differ from this data sheet.
6. The SDS may be found at scytek.com

References

1. Konecki DS et. Al. J Biol Chem 1987; 262:17026-30.
2. Lloyd RV et. Al. Am J Pathol 1988; 130:296-304.

Warranty

No products or "Instructions For Use (IFU)" are to be construed as a recommendation for use in violation of any patents. We make no representations, warranties or assurances as to the accuracy or completeness of information provided on our IFU or website. Our warranty is limited to the actual price paid for the product. ScyTek Laboratories, Inc. is not liable for any property damage, personal injury, time or effort or economic loss caused by our products.

Storage: 2° C



8° C



ScyTek Laboratories, Inc.
205 South 600 West
Logan, UT 84321
U.S.A.



Emergo Europe
Prinsessegracht 20
2514 AP The Hague, The Netherlands