



# Cytokeratin, Multi (Acidic); Clone AE-1 (Ready-To-Use)

<b>Availability/Contents:</b>	<u><b>Item #</b></u>	<u><b>Volume</b></u>
	A00051-0002	2 ml
	A00051-0007	7 ml
	A00051-0025	25 ml

**Description:**

Species:	Mouse
Immunogen:	Human epidermal keratin
Clone:	AE-1
Isotype:	IgG1, kappa
Entrez Gene ID:	3858 (CK10); 3861 (CK14); 3866 (CK15); 3868 (CK16); 3880 (CK19)
Hu Chromosome Loc.:	17q21.2 (CK10); 17q21.2 (CK14); 17q21.2 (CK15); 17q21.2 (CK16); 17q21.2 (CK19)
Synonyms:	K1B; KRT1B; Keratin, type II cytoskeletal 1b; K77; CK-1B; Keratin 1B; Keratin-77; Cytokeratin-1B; Type-II Keratin Kb39
Mol. Weight of Antigen:	40-56.5kDa
Format:	This antibody has been pretitered and quality controlled to work on formalin-fixed paraffin-embedded as well as acetone fixed cryostat tissue sections. No further titration is required.
Specificity:	This antibody recognizes the 56.5kDa (CK10); 50kDa (CK14); 50kDa (CK15); 48kDa (CK16); 40kDa (CK19) keratins of the acidic (Type I or LMW) subfamily.
Background:	Twenty human keratins are resolved with two-dimensional gel electrophoresis into acidic (pI <5.7) and basic (pI >6.0) subfamilies. The acidic keratins have molecular weights (MW) of 56.5, 55, 51, 50, 50', 48, 46, 45, and 40kDa. Many studies have shown the usefulness of keratins as markers in cancer research and tumor diagnosis.
Species Reactivity:	Human, Monkey, Cow, Dog, Rabbit, Mouse, Rat, Chicken, Turtle. Others not known.
Positive Control:	Skin, Squamous cell carcinoma (SCC).
Cellular Localization:	Cytoplasmic
Titer/ Working Dilution:	No further dilution is required.
Microbiological State:	This product is not sterile.

Storage: 2° C  8° C

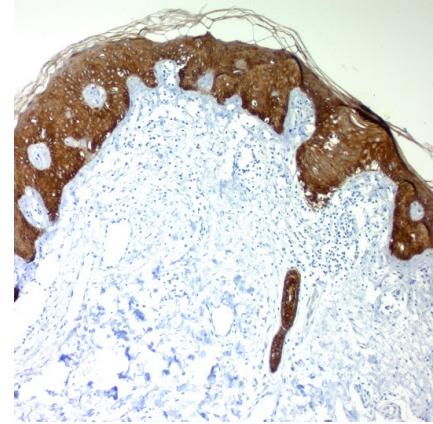


ScyTek Laboratories, Inc.  
205 South 600 West  
Logan, UT 84321  
U.S.A.

**CE**

EC REP  
Emergo Europe  
Prinsessegracht 20  
2514 AP The Hague, The Netherlands

**Uses/Limitations:** Not to be taken internally.  
 For Research Use Only.  
 This product is intended for qualitative immunohistochemistry with normal and neoplastic formalin-fixed, paraffin-embedded tissue sections, to be viewed by light microscopy.  
 Do not use if reagent becomes cloudy.  
 Do not use past expiration date.  
 Non-Sterile.



Formalin-fixed, paraffin-embedded skin stained with Cytokeratin, Acidic; Clone AE-1.

**Ordering Information and Current Pricing at [www.scytek.com](http://www.scytek.com)**

**Procedure:**

1. **Tissue Section Pretreatment (Required):** Staining of formalin fixed, paraffin embedded tissue sections is significantly enhanced by pretreatment with Citrate Plus (ScyTek catalog# CPL500).
2. **Primary Antibody Incubation Time:** We suggest an incubation period of 30 minutes at room temperature. However, depending upon the fixation conditions and the staining system employed, optimal incubation should be determined by the user.
3. **Visualization:** For maximum staining intensity we recommend the “UltraTek HRP Anti-Polyvalent Lab Pack” (ScyTek catalog# UHP125, see IFU for instructions) combined with the “DAB Chromogen/Substrate Bulk Pack (High Contrast)” (ScyTek catalog# ACV500, see IFU for instructions).

**Precautions:**

Contains Sodium Azide as a preservative (0.09% w/v).  
 Do not pipette by mouth.  
 Avoid contact of reagents and specimens with skin and mucous membranes.  
 Avoid microbial contamination of reagents or increased nonspecific staining may occur.  
 This product contains no hazardous material at a reportable concentration according to U.S. 29 CFR 1910.1200, OSHA Hazardous Communication Standard and EC Directive 91/155/EC.


**References:**

1. Kim, Jie Hoon, Hyunee Yim, and Won Hyoung Kang. "Secondary cutaneous amyloidosis in disseminated superficial porokeratosis: a case report." *Journal of Korean medical science* 15.4 (2000): 478-481.
2. Iwaya TA, Maesawa CH, Tamura G, Sato NO, Ikeda KE, Sasaki AK, Othuka KO, Ishida KA, Saito KA, Satodate RY. Esophageal carcinosarcoma: a genetic analysis. *Gastroenterology*. 1997 Sep 1;113(3):973-7.
3. Woodcock-Mitchell J *et. al.* *Journal of Cell Biology* 1982;95:580-8.
4. Tseng SCG *et. al.* *Cell* 1982; 30361.

**Warranty:**

No products or “Instructions For Use (IFU)” are to be construed as a recommendation for use in violation of any patents. We make no representations, warranties or assurances as to the accuracy or completeness of information provided on our IFU or website. Our warranty is limited to the actual price paid for the product. ScyTek Laboratories, Inc. is not liable for any property damage, personal injury, time or effort or economic loss caused by our products. Immunohistochemistry is a complex technique involving both histological and immunological detection methods. Tissue processing and handling prior to immunostaining can cause inconsistent results. Variations in fixation and embedding or the inherent nature of the tissue specimen may cause variations in results. Endogenous peroxidase activity or pseudoperoxidase activity in erythrocytes and endogenous biotin may cause non-specific staining depending on detection system used.

Storage: 2° C  8° C

 ScyTek Laboratories, Inc.  
 205 South 600 West  
 Logan, UT 84321  
 U.S.A.

**CE**

EC REP  
 Emergo Europe  
 Prinsessegracht 20  
 2514 AP The Hague, The Netherlands