

# Bluing Reagent for Hematoxylin

**Description:** A pH-controlled solution for quick and effective bluing of hematoxylin used in histological and cytological procedures.

Nuclei: Purple  
Nuclei after Bluing: Blue

**Uses/Limitations:** Not to be taken internally.  
For In-Vitro Diagnostic use.  
Histological applications.  
Do not use if reagent become cloudy.  
Do not use past expiration date.  
Use caution when handling reagent.  
Non-Sterile.

**Control Tissue:** Any well-fixed tissue stained with hematoxylin.

**Availability/Contents:**

<u>Item #</u>	<u>Volume</u>	<u>Storage</u>
BRT500	500 ml	18-25 °C
BRT999	1000 ml	18-25 °C
BRT3800	1 Gallon	18-25 °C

*Also available in bulk. Please contact for pricing and availability.*

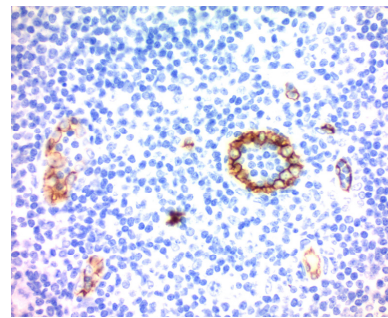


Fig 1. IHC Staining with CD34 on Human tonsil. Counterstained with Mayer's Hematoxylin (Lillie's Modification) for 30 seconds followed by bluing with Bluing Reagent.  
Product Codes:  
CD34 – A00070  
Hematoxylin – HMM  
Bluing Reagent – BRT

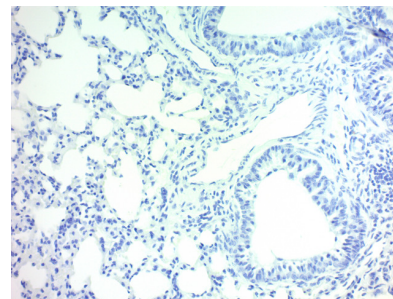


Fig 2. Blued Hematoxylin on Pig Lung.  
Product Codes:  
Hematoxylin. – HMM  
Bluing Reagent – BRT

**Precautions:** Avoid contact with skin and eyes.  
Follow all Federal, State, and local regulations regarding disposal.


**Procedure(s):**


**Counterstaining for IHC:**

Dip slide in Mayer's Hematoxylin (Lillie's Modification) several times. Blue in bluing reagent for 15-30 seconds.

-OR-

Incubate in Mayer's Hematoxylin (Lillie's Modification) for 30-60 seconds. Blue in bluing reagent for 15-30 seconds.

Storage: 2° C  8° C

 ScyTek Laboratories, Inc.  
205 South 600 West  
Logan, UT 84321  
U.S.A.

CE IVD

EC REP  
Emergo Europe  
Prinsessegracht 20  
2514 AP The Hague, The Netherlands

**H&E staining and Hematoxylin standalone:**

1. Stain for 3-5 minutes in Mayer's Hematoxylin (Lillie's Modification). **Note: Longer incubation times provide a darker stain.**
2. Blue in bluing reagent for 15-30 seconds.
3. Continue with incubation in Eosin or dehydration and clearing and mounting.

**References:**

1. Hanwright PJ, Rath JB, von Guionneau N, Slavin B, Pinni S, Zlotolow D, Shores J, Dellon AL, Tuffaha SH. The effects of a porcine extracellular matrix nerve wrap as an adjunct to primary epineurial repair. *The Journal of Hand Surgery*. 2021 Sep 1;46(9):813-e1.
2. Jacobs SO, Sheller-Miller S, Richardson LS, Urrabaz-Garza R, Radnaa E, Menon R. Characterizing the immune cell population in the human fetal membrane. *American Journal of Reproductive Immunology*. 2021 May;85(5):e13368.
3. Albracht-Schulte K, Gonzalez S, Jackson A, Wilson S, Ramalingam L, Kalupahana NS, Moustaid-Moussa N. Eicosapentaenoic Acid Improves Hepatic Metabolism and Reduces Inflammation Independent of Obesity in High-Fat-Fed Mice and in HepG2 Cells. *Nutrients*. 2019 Mar;11(3):599.
4. Bellon M, Moles R, Chaib-Mezrag H, Pancewicz J, Nicot C. JAG1 overexpression contributes to Notch1 signaling and the migration of HTLV-1-transformed ATL cells. *Journal of Hematology & Oncology*. 2018 Dec;11(1):1-2.
5. Nandi SS, Shahshahan HR, Shang Q, Kuty S, Boska M, Mishra PK. MiR-133a mimic alleviates T1DM-induced systolic dysfunction in Akita: an MRI-based study. *Frontiers in physiology*. 2018 Oct 10;9:1275.
6. Jung SH, Song HY, Hyun YS, Kim YC, Whang I, Choi TY, Jo S. A brain atlas of the long arm octopus, *octopus minor*. *Experimental neurobiology*. 2018 Aug;27(4):257.
7. Bellon M, Lu L, Nicot C. Constitutive activation of Pim1 kinase is a therapeutic target for adult T-cell leukemia. *Blood, The Journal of the American Society of Hematology*. 2016 May 19;127(20):2439-50.

Storage: 2° C



8° C



ScyTek Laboratories, Inc.  
205 South 600 West  
Logan, UT 84321  
U.S.A.



Emergo Europe  
Prinsessegracht 20  
2514 AP The Hague, The Netherlands