

Mayer's Hematoxylin (Lillie's Modification)

Description: Mayer's Hematoxylin (Lillie's Modification) is a progressive nuclear hematoxylin stain with several histological applications. Nuclei staining is strong, clean, crisp, and no differentiation is needed. Bluing reagent (Catalog: BRT) may be used following hematoxylin to "blue" or alter the shade of hematoxylin from a purple to blue.

Nuclei: Purple
Nuclei after Bluing: Blue
Nuclei after Eosin: Blue to Violet

Uses/Limitations: Not to be taken internally.
For In-Vitro Diagnostic use only.
Histological applications.
Do not use if reagent become cloudy.
Do not use past expiration date.
Use caution when handling reagent.
Non-Sterile.

Control Tissue: Any well-fixed tissue.

Availability/Contents*:

<u>Item #</u>	<u>Volume</u>
HMM125	125 ml
HMM500	500 ml
HMM999	1000 ml

*Also available in bulk. Please contact for pricing and availability.

Precautions: Avoid contact with skin and eyes.
Follow all Federal, State, and local regulations regarding disposal.

Storage: Store at room temperature (18-25°C)

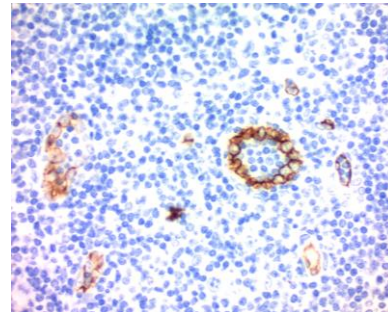


Fig 1. IHC Staining with CD34 on Human tonsil. Counterstained with Mayer's Hematoxylin (Lillie's Modification) for 30 seconds followed by bluing with Bluing Reagent.

Product Codes:
CD34 – A00070
Hematox. – HMM
Bluing Reagent – BRT

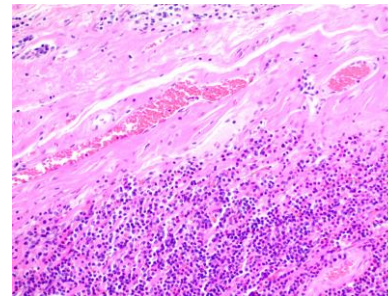


Fig 2. Hematoxylin and Eosin Staining with ScyTek's HAE-1 stain kit.

Product Codes:
H&E Kit – HAE-1, HAE-2
Hematoxlyn. – HMM
Bluing Reagent – BRT
Eosin Y Solution – EYB

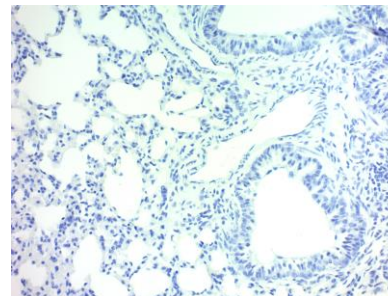


Fig 3. Blued Hematoxylin on Pig Lung.

Product Codes:
Hematoxlyn. – HMM
Bluing Reagent – BRT

Storage: 18° C



25° C



ScyTek Laboratories, Inc.
205 South 600 West
Logan, UT 84321
U.S.A.



Emergo Europe
Prinsessegracht 20
2514 AP The Hague, The Netherlands

Procedure(s):**Counterstaining for IHC:**

Dip slide in Mayer's Hematoxylin (Lillie's Modification) several times. Blue in bluing reagent for 15-30 seconds.

-OR-

Incubate in Mayer's Hematoxylin (Lillie's Modification) for 30-60 seconds. Blue in bluing reagent for 15-30 seconds.

H&E staining and standalone:

1. Stain for 3-5 minutes in Mayer's Hematoxylin (Lillie's Modification). **Note: Longer incubation times provide a darker stain.**
2. Blue in bluing reagent for 15-30 seconds.
3. Continue with incubation in Eosin or dehydration and clearing and mounting.

References:

1. Sheenan, D.C., Hrapchak, B.B. Theory and Practice of Histotechnology, 2nd Edition. Battelle Press, Columbus, OH. Page 262-264. 1980
2. Kluver, H., Barrera, E.A. A Method for the combined staining of cells and fibers in the nervous system. Journal of Neuropathology and Experimental Neurology, 1953, 12: pages 400-403.
3. Margaret M. Powers & George Clark (1955) An Evaluation of Cresyl Echt Violet Acetate as a Nissl Stain, Stain Technology, 30:2, 83-88,

Storage: 18° C



25° C



ScyTek Laboratories, Inc.
205 South 600 West
Logan, UT 84321
U.S.A.



Emergo Europe
Prinsessegracht 20
2514 AP The Hague, The Netherlands