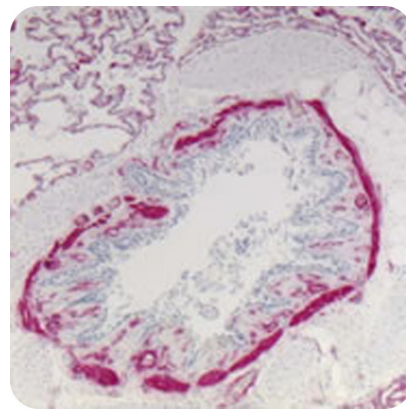


New Fuchsin Kit (For Alkaline Phosphatase)

Description: New Fuchsin Kit (For Alkaline Phosphatase) is a three-component chromogen for immunohistochemical staining and immunoblotting. When in the presence of alkaline phosphatase enzyme, New Fuchsin produces an intense red precipitate that is insoluble in alcohol and may be permanently mounted in synthetic resin. The working solution may be mixed for up to 2 hours prior to application making it suitable for automated staining.

Uses/Limitations: Not to be taken internally.
For In Vitro Diagnostic Use.
Histological applications.
Do not use if reagents become cloudy.
Do not use past expiration date.
Use caution when handling reagents.
Non-Sterile.


Control Tissue: Any well fixed paraffin embedded or frozen tissue section.




Kit Components:

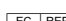
<u>Component</u>	<u>Volume</u>	<u>Storage</u>
New Fuchsin Concentrate	2 ml	2-8°C
Activator	2 ml	2-8°C
Buffer	60 ml	2-8°C

Precautions: Avoid contact with skin and eyes.
Harmful if swallowed.
Follow all Federal, State, and local regulations regarding disposal.

Storage: 2° C  8° C

 ScyTek Laboratories, Inc.
205 South 600 West
Logan, UT 84321
U.S.A.

 EmergoEurope (31)(0) 70 345-8570
Molsnstraat 15
2513 BH Hague, The Netherlands

Instructions For Use NF0001-IFU

Rev. Date: August 16, 2014

Revision: 5

Page 2 of 2

P.O. Box 3286 - Logan, Utah 84323, U.S.A. - Tel. (800) 729-8350 – Tel. (435) 755-9848 - Fax (435) 755-0015 - www.scytek.com

Procedure:

Note 1: Allow reagents to come to room temperature prior to use.

Note 2: Use Tris buffered Saline (Catalog # TBT) for rinsing tissue before and after application of New Fuchsin. Phosphate Buffered Saline will react with the product resulting in reduced staining intensity.

1. Add three drops (120 microliters) of New Fuchsin Chromogen to graduated tube.
2. Add three drops (120 microliters) of New Fuchsin Activator to graduated tube.
3. Agitate gently and allow to sit for two minutes.
4. Fill graduated tube to the 5 ml mark with New Fuchsin Buffer, cap, invert several times and use immediately.
2. Dip slide one time in DI/Distilled water immediately prior to application of New Fuchsin.
3. Apply mixture to tissue section and incubate for 5 minutes.
4. Rinse slide using DI/Distilled water.
5. Apply mixture a second time and incubate for another 5 minutes.
6. Rinse slide using DI/Distilled water.
7. If desired, repeat application for a third time.
8. Rinse slide in two changes of DI/Distilled water.
9. Counterstain as desired.
10. Dehydrate in absolute alcohol, clear and coverslip in synthetic medium.

References:

1. Shin, Jeong-Hyun, et al. "Sphingosine 1-phosphate triggers apoptotic signal for B16 melanoma cells via ERK and caspase activation." Journal of Korean medical science 22.2 (2007): 298-304.

Storage: 2° C



8° C



ScyTek Laboratories, Inc.
205 South 600 West
Logan, UT 84321
U.S.A.



EmergoEurope (31)(0) 70 345-8570
Molsnstraat 15
2513 BH Hague, The Netherlands