


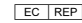


p21^{WAF1} (Tumor Suppressor Protein); Clone WA-1 (HJ21) (Concentrate)

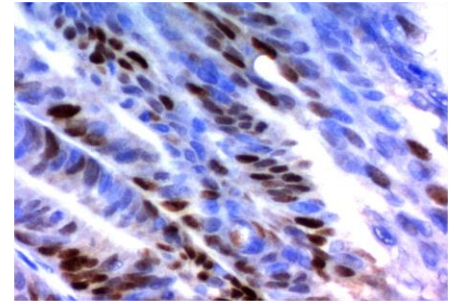
Availability/Contents:	<u>Item #</u>	<u>Volume</u>	
	RA0074-C.1	0.1 ml	
	RA0074-C.5	0.5 ml	
Description:			
Species:	Mouse		
Immunogen:	Human recombinant p21 protein		
Clone:	WA-1 (HJ21)		
Isotype:	IgG1, kappa		
Entrez Gene ID:	1026 (Human); 114851 (Mouse)		
Hu Chromosome Loc.:	6p21.31		
Synonyms:	Activating Fragment 1, CAP20, CDK-interacting protein 1, CDKI, CDKN1, CDKN1A, CIP1, Cyclin-dependent kinase inhibitor 1A (p21, Cip1), DNA Synthesis Inhibitor, MDA6, Melanoma Differentiation Associated Protein 6, p21Cip1/Waf1, PIC1, SDI1, SLC12A9, Wild type p53 activated fragment 1 (WAF1)		
Mol. Weight of Antigen:	21kDa		
Format:	200µg/ml of Ab purified from Bioreactor Concentrate by Protein A/G. Prepared in 10mM PBS with 0.05% BSA & 0.05% azide.		
Specificity:	This antibody recognizes a 21kDa protein, identified as the p21 ^{WAF1} tumor suppressor protein. It is highly specific to p21 and shows no cross-reaction with other closely related mitotic inhibitors.		
Background:	p21 ^{WAF1} is a specific inhibitor of cdk's and a tumor suppressor involved in the pathogenesis of a variety of malignancies. The expression of this gene acts as an inhibitor of the cell cycle during G1 phase and is tightly controlled by the tumor suppressor protein p53. Its expression is induced by the wild type, but not mutant, p53 suppressor protein. Normal cells generally display a rather intense nuclear p21 expression. Loss of p21 expression has been reported in many carcinomas (gastric carcinoma, non-small cell lung carcinoma, thyroid carcinoma).		
Species Reactivity:	Human, Monkey, Mouse and Rat. Others not known.		
Positive Control:	HeLa Cells. Skin, colon, or breast carcinoma.		
Cellular Localization:	Nuclear		
Titer/ Working Dilution:	Immunohistochemistry (Frozen and Formalin-fixed): 1:50 – 1:100		
	Flow Cytometry:	0.5-1 µg/million cells	
	Immunofluorescence:	1-2 µg/ml	
	Western Blotting:	0.5-1 µg/ml	
	Immunoprecipitation:	1-2 µg/500µg protein lysate	
Microbiological State:	This product is not sterile.		

Storage: 2° C  8° C

 ScyTek Laboratories, Inc.
205 South 600 West
Logan, UT 84321
U.S.A.



Emergo Europe
Prinsessegracht 20
2514 AP The Hague, The Netherlands

Uses/Limitations: Not to be taken internally.
 For Research Use Only.
 This product is intended for qualitative immunohistochemistry with normal and neoplastic formalin-fixed, paraffin-embedded tissue sections, to be viewed by light microscopy.
 Do not use if reagent becomes cloudy.
 Do not use past expiration date.
 Non-Sterile.



Ordering Information and Current Pricing at www.scytek.com

FFPE colon cancer tissue stained with p21^{WAF1}; Clone WA-1.

Procedure:

1. **Tissue Section Pretreatment (Required):** Staining of formalin fixed, paraffin embedded tissue sections is significantly enhanced by pretreatment with Citrate Plus (ScyTek catalog# CPL500).
2. **Primary Antibody Incubation Time:** We suggest an incubation period of 30 minutes at room temperature. However, depending upon the fixation conditions and the staining system employed, optimal incubation should be determined by the user.
3. **Visualization:** For maximum staining intensity we recommend the “UltraTek HRP Anti-Polyvalent Lab Pack” (ScyTek catalog# UHP125, see IFU for instructions) combined with the “DAB Chromogen/Substrate Bulk Pack (High Contrast)” (ScyTek catalog# ACV500, see IFU for instructions).


Precautions: Contains Sodium Azide as a preservative (0.09% w/v).
 Do not pipette by mouth.
 Avoid contact of reagents and specimens with skin and mucous membranes.
 Avoid microbial contamination of reagents or increased nonspecific staining may occur.
 This product contains no hazardous material at a reportable concentration according to U.S. 29 CFR 1910.1200, OSHA Hazardous Communication Standard and EC Directive 91/155/EC.


References:

1. Krzywicka-Racka A & Sluder G J Cell Biol 194:199-207 (2011).
2. Folini M et al. Biochem Pharmacol 79:1781-90 (2010).

Warranty:

No products or “Instructions For Use (IFU)” are to be construed as a recommendation for use in violation of any patents. We make no representations, warranties or assurances as to the accuracy or completeness of information provided on our IFU or website. Our warranty is limited to the actual price paid for the product. ScyTek Laboratories, Inc. is not liable for any property damage, personal injury, time or effort or economic loss caused by our products. Immunohistochemistry is a complex technique involving both histological and immunological detection methods. Tissue processing and handling prior to immunostaining can cause inconsistent results. Variations in fixation and embedding or the inherent nature of the tissue specimen may cause variations in results. Endogenous peroxidase activity or pseudoperoxidase activity in erythrocytes and endogenous biotin may cause non-specific staining depending on detection system used.

Storage: 2° C  8° C

 ScyTek Laboratories, Inc.
 205 South 600 West
 Logan, UT 84321
 U.S.A.

CE

EC REP
 Emergo Europe
 Prinsessegracht 20
 2514 AP The Hague, The Netherlands