


Insulin / IRDN (Beta Cell & Insulinoma Marker); Clone E2-E3 & 2D11-H5 (INS04 & INS05) (Concentrate)

Availability/Contents:	<u>Item #</u>	<u>Volume</u>
	RA0163-C.5	0.5 ml
Description:		
Species:	Mouse	
Immunogen:	Purified pig insulin, conjugated to KLH	
Clone:	E2-E3 & 2D11-H5 (INS04 & INS05)	
Isotype:	IgG1, kappa (E2-E3); IgG1, kappa (2D11-H5)	
Entrez Gene ID:	3630 (Human); 397415 (Pig); 280829 (Cow)	
Hu Chromosome Loc.:	11p15.5	
Synonyms:	IDDM2, ILPR, IRDN, MODY10, Proinsulin	
Mol. Weight of Antigen:	6kDa	
Format:	200µg/ml of Ab purified from Bioreactor Concentrate by Protein A/G. Prepared in 1mM PBS with 0.05% BSA & 0.05% azide.	
Specificity:	Recognizes a polypeptide which is identified as insulin, a 51-amino acid polypeptide composed of A and B chains connected through disulfide bonds.	
Background:	Proinsulin, which has very little biological activity, is cleaved by proteases within its cell of origin, producing the insulin molecule and the C-peptide. Insulin enhances membrane transport of glucose, amino acids, and certain ions. It also promotes glycogen storage, formation of triglycerides, and synthesis of proteins and nucleic acids. Deficiency of insulin results in diabetes mellitus. The main storage site for insulin is the pancreatic islets. Antibodies to insulin are important as beta cell and insulinoma marker.	
Species Reactivity:	Human, Cow Pig, Rabbit, and Rat. Others not known.	
Positive Control:	MIA PaCa-2 cells or Pancreas.	
Cellular Localization:	Cytoplasmic	
Titer/ Working Dilution:	Immunohistochemistry (Frozen and Formalin-fixed): 0.5-1 µg/ml Flow Cytometry: 0.5-1 µg/million cells Immunofluorescence: 1-2 µg/ml Western Blotting: 0.5-1 µg/ml Immunoprecipitation: 1-2 µg/500µg protein lysate	
Microbiological State:	This product is not sterile.	

Storage: 2° C  8° C

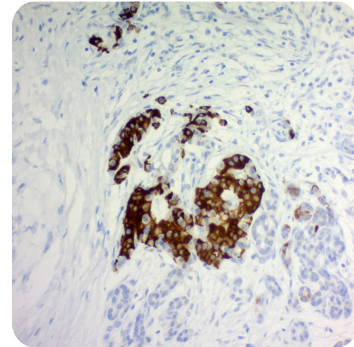


ScyTek Laboratories, Inc.
 205 South 600 West
 Logan, UT 84321
 U.S.A.



 EmergoEurope (31)(0) 70 345-8570
 Molsnstraat 15
 2513 BH Hague, The Netherlands

Uses/Limitations: Not to be taken internally.
For Research Use Only.
This product is intended for qualitative immunohistochemistry with normal and neoplastic formalin-fixed, paraffin-embedded tissue sections, to be viewed by light microscopy.
Do not use if reagent becomes cloudy.
Do not use past expiration date.
Non-Sterile.



Ordering Information and Current Pricing at www.scytek.com

Formalin-fixed, paraffin-embedded human pancreas (20X) stained with Insulin; Clone E2-E3 & 2D11-H5.

Procedure:

- Tissue Section Pretreatment (Highly Recommended):** Staining of formalin fixed, paraffin embedded tissue sections is significantly enhanced by pretreatment with Citrate Plus (ScyTek catalog# CPL500).
- Primary Antibody Incubation Time:** We suggest an incubation period of 30 minutes at room temperature. However, depending upon the fixation conditions and the staining system employed, optimal incubation should be determined by the user.
- Visualization:** For maximum staining intensity we recommend the “UltraTek HRP Anti-Polyvalent Lab Pack” (ScyTek catalog# UHP125, see IFU for instructions) combined with the “DAB Chromogen/Substrate Bulk Pack (High Contrast)” (ScyTek catalog# ACV500, see IFU for instructions).

Precautions: Contains Sodium Azide as a preservative (0.09% w/v).
Do not pipette by mouth.
Avoid contact of reagents and specimens with skin and mucous membranes.
Avoid microbial contamination of reagents or increased nonspecific staining may occur.
This product contains no hazardous material at a reportable concentration according to U.S. 29 CFR 1910.1200, OSHA Hazardous Communication Standard and EC Directive 91/155/EC.


References:

- de la Tour, D., et al. 2001. Mol. Endoc. 15: 476-483.
- Rajagopal, J., et al. 2003. Science 299: 363.
- Morisset, J., et al. 2003. J. Histochem. Cytochem. 51: 1501-1513.

Warranty:

No products or “Instructions For Use (IFU)” are to be construed as a recommendation for use in violation of any patents. We make no representations, warranties or assurances as to the accuracy or completeness of information provided on our IFU or website. Our warranty is limited to the actual price paid for the product. ScyTek Laboratories, Inc. is not liable for any property damage, personal injury, time or effort or economic loss caused by our products. Immunohistochemistry is a complex technique involving both histological and immunological detection methods. Tissue processing and handling prior to immunostaining can cause inconsistent results. Variations in fixation and embedding or the inherent nature of the tissue specimen may cause variations in results. Endogenous peroxidase activity or pseudoperoxidase activity in erythrocytes and endogenous biotin may cause non-specific staining depending on detection system used.

Storage: 2° C  8° C



ScyTek Laboratories, Inc.
205 South 600 West
Logan, UT 84321
U.S.A.

CE

 EmergoEurope (31)(0) 70 345-8570
Molsnstraat 15
2513 BH Hague, The Netherlands