


CD147 / EMMPRIN / Basigin (BSG); Clone BSG/963 (Concentrate)

Availability/Contents:	<u>Item #</u>	<u>Volume</u>
	RA0428-C.1	0.1 ml
	RA0428-C.5	0.5 ml
	RA0428-C1	1 ml

Description:

Species:	Mouse
Immunogen:	Recombinant human Basigin (BSG) or CD147 protein
Clone:	BSG/963
Isotype:	IgG1
Entrez Gene ID:	682 (Human)
Hu Chromosome Loc.:	19p13.3
Synonyms:	5A11 Antigen; 5F7; Basigin; Blood brain barrier HT7 antigen BSG; Extracellular Matrix Metalloproteinase Inducer (EMMPRIN); Leukocyte Activation Antigen M6; Neurothelin; OK Blood Group Antigen; TCSF; Tumor Cell-derived Collagenase Stimulatory Factor.
Mol. Weight of Antigen:	35kDa (non-reduced); 40kDa (reduced)
Format:	200µg/ml of Ab purified from Bioreactor Concentrate by Protein A/G. Prepared in 10mM PBS with 0.05% BSA & 0.05% azide.
Specificity:	This antibody recognizes an extracellular epitope of human CD147.
Background:	CD147 is expressed more intensely on thymocytes than on mature peripheral blood T-cells. CD147 is important in spermatogenesis, embryo implantation, neural network formation, and tumor progression. It stimulates the production of interstitial collagenase, gelatinase A, stromelysin-1, and various metalloproteinases (MMPs) by fibroblasts. These enzymes are important factors in cancer invasion and metastasis.
Species Reactivity:	Human. Others not known.
Positive Control:	HSB2 cells. Renal Cell, Colon or Testicular carcinoma.
Cellular Localization:	Cell surface
Titer/ Working Dilution:	Immunohistochemistry (Frozen and Formalin-fixed): 0.5-1 µg/ml Flow Cytometry: 0.5-1 µg/million cells Immunofluorescence: 1:100-1:200 Western Blotting: 0.5-1 µg/ml Immunoprecipitation: 1-2 µg/500µg protein lysate
Microbiological State:	This product is not sterile.

Storage: 2° C  8° C

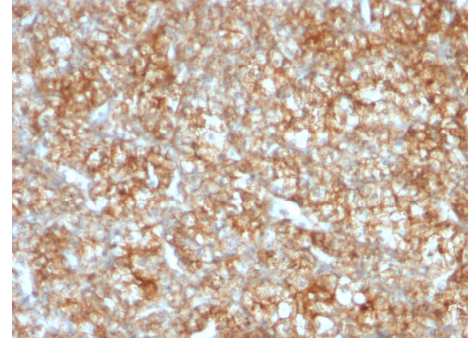


ScyTek Laboratories, Inc.
 205 South 600 West
 Logan, UT 84321
 U.S.A.



EC REP
 Emergo Europe
 Molenstraat 15
 2513 BH Hague, The Netherlands

Uses/Limitations: Not to be taken internally.
For Research Use Only.
This product is intended for qualitative immunohistochemistry with normal and neoplastic formalin-fixed, paraffin-embedded tissue sections, to be viewed by light microscopy.
Do not use if reagent becomes cloudy.
Do not use past expiration date.
Non-Sterile.



Ordering Information and Current Pricing at www.scytek.com

Formalin-fixed, paraffin-embedded human Renal Cell Carcinoma stained with CD147; Clone BSG/963.

Procedure:

1. **Tissue Section Pretreatment (Required):** Staining of formalin fixed, paraffin embedded tissue sections is significantly enhanced by pretreatment with Citrate Plus (ScyTek catalog# CPL500).
2. **Primary Antibody Incubation Time:** We suggest an incubation period of 30 minutes at room temperature. However, depending upon the fixation conditions and the staining system employed, optimal incubation should be determined by the user.
3. **Visualization:** For maximum staining intensity we recommend the “UltraTek HRP Anti-Polyvalent Lab Pack” (ScyTek catalog# UHP125, see IFU for instructions) combined with the “DAB Chromogen/Substrate Bulk Pack (High Contrast)” (ScyTek catalog# ACV500, see IFU for instructions).

Precautions: Contains Sodium Azide as a preservative (0.09% w/v).
Do not pipette by mouth.
Avoid contact of reagents and specimens with skin and mucous membranes.
Avoid microbial contamination of reagents or increased nonspecific staining may occur.
This product contains no hazardous material at a reportable concentration according to U.S. 29 CFR 1910.1200, OSHA Hazardous Communication Standard and EC Directive 91/155/EC.


References:

1. Kirsch AH *et. al.* Tissue Antigens. 1997;50(2):147-52.

Warranty:

No products or “Instructions For Use (IFU)” are to be construed as a recommendation for use in violation of any patents. We make no representations, warranties or assurances as to the accuracy or completeness of information provided on our IFU or website. Our warranty is limited to the actual price paid for the product. ScyTek Laboratories, Inc. is not liable for any property damage, personal injury, time or effort or economic loss caused by our products. Immunohistochemistry is a complex technique involving both histological and immunological detection methods. Tissue processing and handling prior to immunostaining can cause inconsistent results. Variations in fixation and embedding or the inherent nature of the tissue specimen may cause variations in results. Endogenous peroxidase activity or pseudoperoxidase activity in erythrocytes and endogenous biotin may cause non-specific staining depending on detection system used.

Storage: 2° C  8° C

 ScyTek Laboratories, Inc.
205 South 600 West
Logan, UT 84321
U.S.A.

CE

EC REP

Emergo Europe
Molenstraat 15
2513 BH Hague, The Netherlands