



# Secretory Component / ECM1; Clone SPM217 (Concentrate)

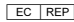
Availability/Contents:	Item #	Volume
	RA0575-C.1	0.1 ml
	RA0575-C.5	0.5 ml
	RA0575-C1	1 ml

## Description:

Species:	Mouse.
Immunogen:	Secretory Component protein isolated from human colostrum.
Clone:	SPM217.
Isotype:	IgG1, kappa.
Entrez Gene ID:	1893.
Hu Chromosome Loc.:	1q21.2.
Synonyms:	ECM1, Extracellular Matrix Protein 1, Secretory Component p85, URBWD.
Mol. Weight of Antigen:	~80kDa.
Format:	200ug/ml of antibody purified from Bioreactor Concentrate by Protein A/G. Prepared in 10mM PBS with 0.05% BSA & 0.05% azide.
Specificity:	This monoclonal antibody reacts with a reduction-resistant epitope present in both free and SIgA bound Secretory Component. It does not react with the cell lines lacking secretory component.
Background:	The Secretory Component antibody is useful for studying the distribution and level of both free and bound secretory component. Secretory component is differentially expressed in epithelium, and the antibody is a popular marker for identifying subpopulations of epithelial cells and epithelial differentiation. The Secretory component antibody is a useful research tool for studying mucosal immunity, inflammation, remodeling, differentiation and tumorigenesis, all processes associated with differential secretory component expression.
Species Reactivity:	Reacts with human and rat. Others not known.
Positive Control:	Stomach, lung, or breast tumor.
Cellular Localization:	Cell surface and cytoplasmic.
Titer/ Working Dilution:	Immunohistochemistry (Frozen and Formalin-Fixed): 0.5-1 µg/ml Flow Cytometry: 0.5-1 µg/million cells Immunofluorescence: 1-2 µg/ml
Microbiological State:	This product is not sterile.

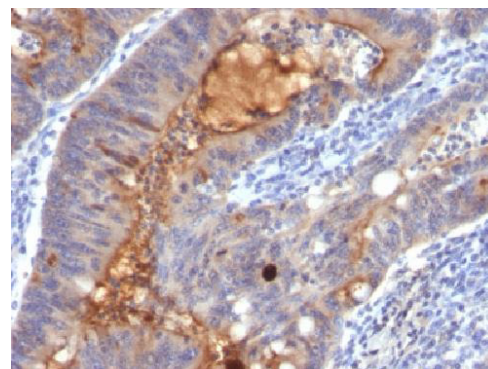
Storage: 2° C  8° C

 ScyTek Laboratories, Inc.  
205 South 600 West  
Logan, UT 84321  
U.S.A.

**CE**  
  
 Emergo Europe  
 Prinsessegracht 20  
 2514 AP The Hague, The Netherlands

**Uses/Limitations:**

- Not to be taken internally.
- For Research Use Only.
- This product is intended for qualitative immunohistochemistry with normal and neoplastic formalin-fixed, paraffin-embedded tissue sections, to be viewed by light microscopy.
- Do not use if reagent becomes cloudy.
- Do not use past expiration date.
- Non-Sterile.



FFPE human colon carcinoma stained with Secretory Component; Clone SPM217.

**Ordering Information and Current Pricing at** [www.scytek.com](http://www.scytek.com)

**Procedure:**

- Tissue Section Pretreatment (Required):** Staining of formalin fixed, paraffin embedded tissue sections is significantly enhanced by pretreatment with Tris-EDTA HIER Solution (10x) pH 9.0 (ScyTek catalog# TES500) for 5-10 minutes at >95°C followed by cooling to room temperature for 20 minutes.
- Primary Antibody Incubation Time:** We suggest an incubation period of 30 minutes at room temperature. However, depending upon the fixation conditions and the staining system employed, optimal incubation should be determined by the user.
- Visualization:** For maximum staining intensity we recommend the “CRF Anti-Polyvalent HRP Polymer (DAB) Lab Pack” (ScyTek catalog# CPP125, see IFU for instructions), combined with the “DAB Chromogen/Substrate Bulk Pack (High Contrast)” (ScyTek catalog# ACV500, see IFU for instructions).

**Precautions:**

- Contains Sodium Azide as a preservative (0.09% w/v).
- Do not pipette by mouth.
- Avoid contact of reagents and specimens with skin and mucous membranes.
- Avoid microbial contamination of reagents or increased nonspecific staining may occur.
- This product contains no hazardous material at a reportable concentration according to U.S. 29 CFR 1910.1200, OSHA Hazardous Communication Standard and EC Directive 91/155/EC.


**References:**

- Bartek J et. al. Histochemistry 91:235-244 (1989).

**Warranty:**

No products or “Instructions For Use (IFU)” are to be construed as a recommendation for use in violation of any patents. We make no representations, warranties or assurances as to the accuracy or completeness of information provided on our IFU or website. Our warranty is limited to the actual price paid for the product. ScyTek Laboratories, Inc. is not liable for any property damage, personal injury, time or effort or economic loss caused by our products. Immunohistochemistry is a complex technique involving both histological and immunological detection methods. Tissue processing and handling prior to immunostaining can cause inconsistent results. Variations in fixation and embedding or the inherent nature of the tissue specimen may cause variations in results. Endogenous peroxidase activity or pseudoperoxidase activity in erythrocytes and endogenous biotin may cause non-specific staining depending on detection system used.

Storage: 2° C  8° C



ScyTek Laboratories, Inc.  
205 South 600 West  
Logan, UT 84321  
U.S.A.

CE

EMERGO  
Emergo Europe  
Prinsessegracht 20  
2514 AP The Hague, The Netherlands