



# CD10 (Membrane Metalloendopeptidase); Clone MME/6461 (Concentrate)

Availability/Contents:	Item #	Volume
	RA0603-C.1	0.1 ml
	RA0603-C.5	0.5 ml
	RA0603-C1	1 ml

## Description:

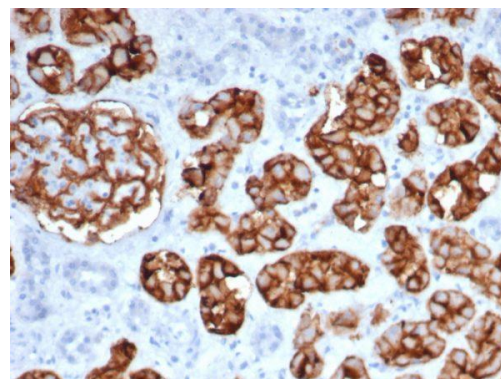
Species:	Mouse
Immunogen:	Recombinant human CD10 protein fragment (aa 54-181) (exact sequence is proprietary)
Clone:	MME/6461
Isotype:	IgG2b / Kappa
Entrez Gene ID:	4311
Hu Chromosome Loc.:	3q25.2
Synonyms:	Neprilysin, Atriopeptidase, Common acute lymphocytic leukemia antigen, Enkephalinase, Neutral endopeptidase 24.11, Skin fibroblast elastase, Atriopeptidase; Common acute lymphocytic leukemia antigen (CALLA); Enkephalinase (EPN); gp100; Membrane metalloendopeptidase (MME); Neprilysin; Neutral endopeptidase (NEP); Skin fibroblast elastase (SFE)
Mol. Weight of Antigen:	100kDa
Format:	200ug/ml of antibody purified from Bioreactor Concentrate by Protein A/G. Prepared in 10mM PBS with 0.05% BSA & 0.05% azide.
Specificity:	Recognizes a 100kDa glycoprotein, identified as CD10, also known as Common Acute Lymphocytic Leukemia Antigen (CALLA).
Background:	CD10 is a cell surface enzyme with neutral metalloendopeptidase activity, which inactivates a variety of biologically active peptides. CD10 is expressed on the cells of lymphoblastic, Burkitt's, and follicular germinal center lymphomas, and on cells from patients with chronic myelocytic leukemia (CML). It is also expressed on the surface of normal early lymphoid progenitor cells, immature B cells within adult bone marrow and germinal center B cells within lymphoid tissue. CD10 is also present on breast myoepithelial cells, bile canaliculi, fibroblasts, with especially high expression on the brush border of kidney and gut epithelial cells.
Species Reactivity:	Human
Positive Control:	Human small intestine or Human kidney., Human Tonsil
Cellular Localization:	Cell Membrane
Titer/ Working Dilution:	Immunohistochemistry (Frozen and Formalin-fixed): 1-2µg/ml Western Blotting: 2-4µg/ml
Microbiological State:	This product is not sterile.

Storage: 2° C  8° C

 ScyTek Laboratories, Inc.  
205 South 600 West  
Logan, UT 84321  
U.S.A.

**Uses/Limitations:**

Not to be taken internally.  
For Research Use Only.  
This product is intended for qualitative immunohistochemistry with normal and neoplastic formalin-fixed, paraffin-embedded tissue sections, to be viewed by light microscopy.  
Do not use if reagent becomes cloudy.  
Do not use past expiration date.  
Non-Sterile.



Formalin-fixed, paraffin-embedded human kidney stained with CD10 Mouse Monoclonal Antibody (MME/6461).

**Ordering Information and Current Pricing at [www.scytek.com](http://www.scytek.com)**
**Procedure:**

- Tissue Section Pretreatment (Highly Recommended):** Staining of formalin fixed, paraffin embedded tissue sections is significantly enhanced by pretreatment with Tris-EDTA HIER Solution (10x) pH 9.0 (ScyTek catalog# TES500) or Citrate Plus (10x) HIER Solution (ScyTek catalog# CPL500).
- Primary Antibody Incubation Time:** We suggest an incubation period of 30 minutes at room temperature. However, depending upon the fixation conditions and the staining system employed, optimal incubation should be determined by the user.
- Visualization:** For maximum staining intensity we recommend the “UltraTek HRP Anti-Polyvalent Lab Pack” (ScyTek catalog# UHP125, see IFU for instructions) combined with the “DAB Chromogen/Substrate Bulk Pack (High Contrast)” (ScyTek catalog# ACV500, see IFU for instructions).

**Precautions:**


Contains Sodium Azide as a preservative (0.09% w/v).  
Do not pipette by mouth.  
Avoid contact of reagents and specimens with skin and mucous membranes.  
Avoid microbial contamination of reagents or increased nonspecific staining may occur.  
This product contains no hazardous material at a reportable concentration according to U.S. 29 CFR 1910.1200, OSHA Hazardous Communication Standard and EC Directive 91/155/EC.


**References:**

- De Rie MA, et al. Clin Exp Dermatol.1996 Mar;21(2):104-11.

**Warranty:**

No products or “Instructions For Use (IFU)” are to be construed as a recommendation for use in violation of any patents. We make no representations, warranties or assurances as to the accuracy or completeness of information provided on our IFU or website. Our warranty is limited to the actual price paid for the product. ScyTek Laboratories, Inc. is not liable for any property damage, personal injury, time or effort or economic loss caused by our products. Immunohistochemistry is a complex technique involving both histological and immunological detection methods. Tissue processing and handling prior to immunostaining can cause inconsistent results. Variations in fixation and embedding or the inherent nature of the tissue specimen may cause variations in results. Endogenous peroxidase activity or pseudoperoxidase activity in erythrocytes and endogenous biotin may cause non-specific staining depending on detection system used.

Storage: 2° C  8° C

 ScyTek Laboratories, Inc.  
205 South 600 West  
Logan, UT 84321  
U.S.A.