


# Calgranulin B / MRP14 / (Macrophage Marker); Clone CAGB/426 (Concentrate)

Availability/Contents:	Item #	Volume
	RA1065-C.1	0.1 ml
	RA1065-C.5	0.5 ml
	RA1065-C1	1 ml

### Description:

Species:	Mouse
Immunogen:	Recombinant human CAGB protein
Clone:	CAGB/426
Isotype:	IgM, kappa
Entrez Gene ID:	6280
Hu Chromosome Loc.:	1q21
Synonyms:	CAGB, Calgranulin-B, Calprotectin LH1 Subunit, Leukocyte L1 Complex Heavy Chain, CFAG, CGLB, Cystic Fibrosis antigen B, L1AG, Migration Inhibitory Factor-Related Protein 14, Myeloid-Related Proteins 14, MRP14, S100A9, S100 Calcium-Binding Protein A9.
Mol. Weight of Antigen:	14kDa
Format:	200ug/ml of antibody purified from Bioreactor Concentrate by Protein A/G. Prepared in 10mM PBS with 0.05% BSA & 0.05% azide.
Specificity:	This antibody identifies a 12-14kDa doublet of Calgranulin A/B (also known as S100A8/A9 or MRP-8/14) expressed by granulocytes, monocytes and by tissue macrophages. This antibody reacts with neutrophils, monocytes, macrophages, and squamous mucosal epithelia.
Background:	The protein encoded by this gene is a member of the S100 family of proteins containing 2 EF-hand calcium-binding motifs. S100 proteins are localized in the cytoplasm and/or nucleus of a wide range of cells, and involved in the regulation of a number of cellular processes such as cell cycle progression and differentiation. Altered expression of this protein is associated with the disease cystic fibrosis.
Species Reactivity:	Human. Others not known.
Positive Control:	Tonsil, Lymph Node or Spleen
Cellular Localization:	Cytoplasmic
Titer/ Working Dilution:	Immunohistochemistry (Frozen and Formalin-fixed): 1-2µg/ml
Microbiological State:	This product is not sterile.

 Storage: 2° C  8° C


 ScyTek Laboratories, Inc.  
 205 South 600 West  
 Logan, UT 84321  
 U.S.A.

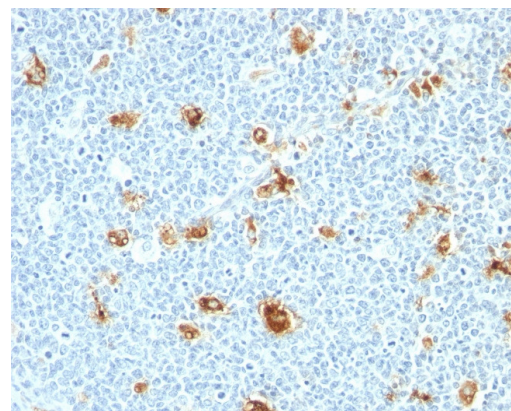
CE

EC REP

 Emergo Europe  
 Prinsessegracht 20  
 2514 AP The Hague, The Netherlands

**Uses/Limitations:**

- Not to be taken internally.
- For Research Use Only.
- This product is intended for qualitative immunohistochemistry with normal and neoplastic formalin-fixed, paraffin-embedded tissue sections, to be viewed by light microscopy.
- Do not use if reagent becomes cloudy.
- Do not use past expiration date.
- Non-Sterile.



FFPE human tonsil stain using Calgranulin B; Clone CAGB/426.

**Ordering Information and Current Pricing at** [www.scytek.com](http://www.scytek.com)

### Procedure:

- Tissue Section Pretreatment (Required):** Staining of formalin fixed, paraffin embedded tissue sections is significantly enhanced by pretreatment with pH 8-9 HIER Solution (see ScyTek catalog# ETA or TES for instructions).
- Primary Antibody Incubation Time:** We suggest an incubation period of 30 minutes at room temperature. However, depending upon the fixation conditions and the staining system employed, optimal incubation should be determined by the user.
- Visualization:** For maximum staining intensity we recommend the "CRF Anti-Polyvalent HRP Polymer" (ScyTek catalog# ABZ008, see IFU for instructions), combined with the "DAB Chromogen/Substrate Bulk Pack (High Contrast)" (ScyTek catalog# ACV500, see IFU for instructions).

**Precautions:**

- Contains Sodium Azide as a preservative (0.09% w/v).
- Do not pipette by mouth.
- Avoid contact of reagents and specimens with skin and mucous membranes.
- Avoid microbial contamination of reagents or increased nonspecific staining may occur.
- This product contains no hazardous material at a reportable concentration according to U.S. 29 CFR 1910.1200, OSHA Hazardous Communication Standard and EC Directive 91/155/EC.


### References:

- Hermani, A., et al. Calcium-binding proteins S100A8 and S100A9 as novel diagnostic markers in human prostate cancer. Clinical Cancer Research 11:5146-5152. 2005

### Warranty:

No products or "Instructions For Use (IFU)" are to be construed as a recommendation for use in violation of any patents. We make no representations, warranties or assurances as to the accuracy or completeness of information provided on our IFU or website. Our warranty is limited to the actual price paid for the product. ScyTek Laboratories, Inc. is not liable for any property damage, personal injury, time or effort or economic loss caused by our products. Immunohistochemistry is a complex technique involving both histological and immunological detection methods. Tissue processing and handling prior to immunostaining can cause inconsistent results. Variations in fixation and embedding or the inherent nature of the tissue specimen may cause variations in results. Endogenous peroxidase activity or pseudoperoxidase activity in erythrocytes and endogenous biotin may cause non-specific staining depending on detection system used.

Storage: 2° C  8° C

 ScyTek Laboratories, Inc.  
205 South 600 West  
Logan, UT 84321  
U.S.A.

CE

EC REP  
Emergo Europe  
Prinsessegracht 20  
2514 AP The Hague, The Netherlands