

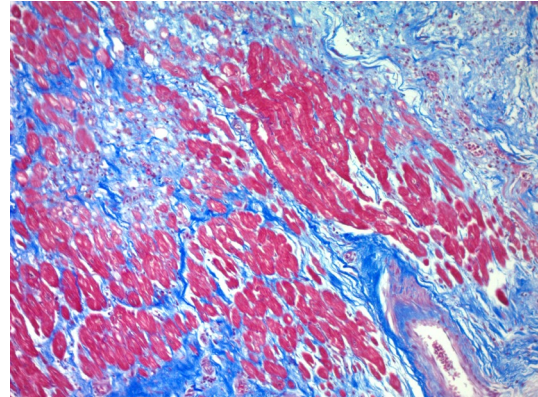
Trichrome Stain Kit (with Iodine)

Description: The Trichrome Stain Kit (with Iodine) is intended for use in the histological visualization and differentiation of collagen in tissue sections. Gram's Iodine is offered as an alternative to Bouin's Fluid post fixative, and is significantly less hazardous. Iodine post-fixation improves the color and staining of collagen and is comparable to trichrome kits that utilize Bouin's. No nuclear counterstain is included with this kit. This kit is intended for use on formalin-fixed sections.

<u>Tissue Component:</u>	<u>Staining Color/Pattern:</u>
Collagen:	Blue
Muscle Fibers:	Red
Nuclei:	Red

Uses/Limitations: Not to be taken internally.
For In-Vitro Diagnostic use.
Histological applications.
Do not use if reagents become cloudy.
Do not use past expiration date.
Use caution when handling reagents.
Non-Sterile.
Tissue

Positive Control Tissue: Lung
Liver
Colon
Stomach



Trichrome Stain Kit with Gram's Iodine post-fixative on a human heart that had suffered a heart attack.


Kit Contents:

<u>Item #</u>	<u>Components</u>	<u>-1 Kit</u>	<u>-2 Kit</u>	<u>Storage</u>
GIN125	Gram's Iodine	125 ml	2 x 30ml	18-25°C
BSU125	Biebrich Scarlet / Acid Fuchsin Solution	125 ml	30ml	18-25°C
PPA125	Phosphomolybdic/Phosphotungstic Acid Solution	125 ml	30ml	18-25°C
ABP125	Aniline Blue Solution	125 ml	30ml	18-25°C
AAE125	Acetic Acid Solution (1%)	125 ml	30ml	18-25°C

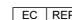
Precautions: Avoid contact with skin and eyes.
Harmful if swallowed.
Follow all Federal, State, and local regulations regarding disposal.

Procedure:

Storage: 18° C  25° C

 ScyTek Laboratories, Inc.
205 South 600 West
Logan, UT 84321
U.S.A.


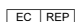
 Emργο Europe
Prinsessegracht 20
2514 AP The Hague, The Netherlands

1. Deparaffinize sections if necessary and hydrate to distilled water.
2. Preheat Gram's Iodine in a water bath to 56° - 64° centigrade in a fume hood or very well ventilated area.
3. Place slides in preheated Gram's Iodine for 60 minutes followed by a 10 minute cooling period.
4. Rinse slide in tap water for at least 10 minutes.
8. Rinse slide in distilled water.
9. Apply Biebrich Scarlet / Acid Fuchsin Solution to slide for 5-10 minutes.
10. Rinse slide in distilled water.
11. Differentiate in Phosphomolybdic/Phosphotungstic Acid Solution for 10-15 minutes.
12. Without rinsing, apply Aniline Blue Solution to slide for 5-10 minutes.
13. Rinse slide in distilled water.
14. Apply Acetic Acid Solution (1%) to slide for 3-5 minutes.
15. Dehydrate in absolute alcohol.
16. Clear in Xylene or Xylene Substitute, and mount in synthetic resin.

Note: Bouin's Fluid (not provided) may be needed to achieve the very bright red colors sometimes associated with trichrome staining.

References:

1. Yu, Yufeng, and Clifford M. Chapman. "Masson trichrome stain: Postfixation substitutes." Journal of histotechnology 26.2 (2003): 131-134.
2. A.F.I.P. Laboratory Methods in Histotechnology; 1992, pages 132-133.
3. Bekeredjian R., Walton C.B., MacCannell K.A., Ecker J., Kruse F., et al. Conditional HIF-1 α Expression Produces a Reversible Cardiomyopathy. PLoS ONE 5(7): e11693. Doi:10.1371/journal.pone.0011693. (2010)
4. Zwaans BM, Krueger S, Bartolone SN, Chancellor MB, Marples B, Lamb LE. Modeling of chronic radiation-induced cystitis in mice. Advances in Radiation Oncology. 2016 Aug 1.
5. Sheehan, DC., Hrapchak, BB. Theory and Practice of Histotechnology; 1980, page 190.

Storage: 18° C  25° C ScyTek Laboratories, Inc.
205 South 600 West
Logan, UT 84321
U.S.A.CE 
Emergo Europe
Prinsessegracht 20
2514 AP The Hague, The Netherlands